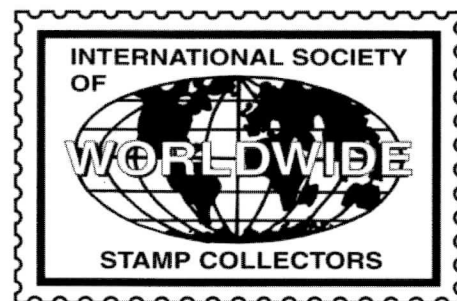


# The Circuit

September/October 2012 • Volume 30 No. 5



Affiliate of APS (#151) & Study Unit of ATA

[www.iswsc.org](http://www.iswsc.org)

The Official Journal of the International Society of Worldwide Stamp Collectors

## How Many Stamps Are There?

by Bob Skinner (#2581)

If you wanted to collect a copy of every stamp, how many would that be? When this was asked recently on a popular stamp discussion group, the first responder channeled Carl Sagen by answering "billions and billions". While it may surprise some, there are more reasoned answers to this question available both in print and on the Web. But let's start by assuming that you want to do the calculation yourself. Besides having a lot of spare time, what are some of the considerations involved?

Counts are almost certainly going to be based on listings in stamp catalogs, so it makes sense to remind ourselves of one major challenge before going any further: worldwide catalogs do not include several large categories of philatelic materials—revenues and postal stationery being two of the most obvious. So if you want to include such items in your tally, you will need to consult other sources that are not considered in this article. But I suspect most of us would be satisfied to stick with the stamps enumerated in one of the major worldwide catalog sets, such as those published by Scott, Stanley Gibbons, Michel, Yvert & Tellier, et. al.

A good place to begin then is deciding which worldwide catalog you want to use. The choice of catalog is critical because every publisher will include stamps not in the others and this can dramatically impact the total. The most extensive differences relate to how the editors cover what are sometimes termed wallpaper issues. (Michel has a reputation for being the most liberal, although most major catalogs include more than Scott.) At the individual stamp level, catalogs are littered with missing numbers for stamps that have been removed over the years (or at least demoted to a minor listing) in one catalog but not in another.

The depth of coverage varies even within an individual publisher's catalogs. Consider Stanley Gibbons' *Simplified Catalogue of the World* versus their specialized country/area catalogs. Another good example is the *Scott Classics Catalogue* for 1840-1940. The latter contains many thousands of listings missing in Scott's standard worldwide catalogs, such as the five and a half pages covering China's Treaty Ports.

Another major consideration: How do you count varieties? When non-collectors learn that you collect the world and want to know how many stamps there are, they undoubtedly are thinking of face different, not being aware of the niceties of watermarks, perforations, etc.—the very attributes that make philately interesting for so many collectors. But is it really a meaningful answer to the question if your counts are based on minute differences only revealed in the most specialized studies? In the counts I am familiar with,

Continued on page 4

## Call for Nominations

Nominations are sought for candidates to serve in an elected position as an At-Large member of the ISWSC Board of Directors. Elections will be held in December/January, with winning candidates serving two year terms (beginning in February 2013) on the ISWSC Board of Directors. Nominations are also sought for an individual to serve in an appointed position as Director of Public Relations.

For information concerning the duties of each position or to express interest in being a nominee, please contact ISWSC Executive Director, **Joanne Berkowitz** (#98).

**ISWSC BOARD OF DIRECTORS****Executive Director:**

Dr. Joanne Berkowitz (#98)  
PO Box 19006  
Sacramento, CA 95819-0006—USA  
joannebe@pacbell.net

**President ('13):**

John Seidl (#1646)  
4324 Granby Way  
Marietta, GA 30062-8150—USA  
john.seidl@gmail.com

**Vice President ('13)**

Randy Smith (#1111) (*address below*)

**Secretary ('13):**

Dan Neubert (#2619)  
4413 Shoreview Rd  
Robbinsdale, MN 55422-5505—USA  
dnmn55422@aol.com

**Immediate Past President:**

Mike Crump (#2126) (*address below*)

**Director of Membership ('13):**

Jeff Schumer (#2101)  
6410 Cloister Gate Dr  
Baltimore, MD 21212-1057—USA  
jschumer@comcast.net

**Director of Public Relations ('13):**

*vacant*

**Director of Stamp Outreach ('13):**

Richard Rizzo (#2215)  
18300 Winter Park Ct  
Gaithersburg, MD 20879-4626—USA  
poly76ce@gmail.com

**Director At-Large ('12):**

Duncan Koller (#2154)  
11989 NW Coleman Dr  
Portland, OR 97229-4980—USA  
duncankoller@comcast.net

**Director At-Large ('12):**

Werner Zarnikow (#2454)  
110 W Prairie St  
Wilton, IA 52778-9531—USA  
wernerone@netwtc.net

**Director At-Large ('12):**

Paul Glass (#2438)  
320 Carlene Dr  
Sparks, NV 89436-8978—USA  
pglass@charter.net

**Director At-Large ('12):**

Bob Armstrong (#1392)  
2209 SW Oak Ridge Rd  
Palm City, FL 34990-2159—USA  
googiepox@comcast.net

**THE CIRCUIT EDITOR**

Randy Smith (#1111)  
PO Box 2085  
Minneapolis, MN 55402-0085—USA  
rasmary4@frontiernet.net

**REGIONAL REPRESENTATIVES****Australasia:**

Noel Routley (#1610)  
Post Box 368  
Koondrook, VIC 3580—AUSTRALIA  
noelroutley@bigpond.com

**British Isles:**

Karen Rose (#584)  
71 Pearson St  
Cradley Heath  
West Midlands B64 6EE—  
GREAT BRITAIN

**Central/South America:**

*vacant*

**Canada:**

*vacant*

**Eastern Europe:**

*vacant*

**Scandinavia/Baltics:**

Martti Vihanto (#830)  
PO Box 34  
FIN-20521 Turku—FINLAND  
martti.vihanto@pp1.inet.fi

**Africa:**

*Vacant*

**Western Europe:**

*vacant*

**ISWSC PROGRAM CONTACTS****SALES CIRCUIT MANAGER**

Gene Stutzenstein (#2716)  
PO Box 8846  
Toledo, OH 43623-0846—USA  
genestutz@yahoo.com

**OMNI EXCHANGE****Manager:**

David Paul (#59)  
2 Heritage Dr  
Belchertown, MA 01007-9548—USA  
dpaul11@hotmail.com

**Co-Manager:**

Dale E. Harris (#2311)  
212 Schofield Dr  
Reedsport, OR 97467-1366—USA  
harrisda@ohsu.edu

**Co-Manager:**

Tom Wasniewski (#2596)  
2555 Woodfield Blvd  
Franklin, IN 46131-6918—USA  
t.wasniewski@comcast.net

**PREMIUM CIRCUIT MANAGER**

Ken Wills (#2150)  
5308 Shadow Glen Dr  
Grapevine, TX 76051-7350—USA  
wills@airmail.net

**STAMP ANSWER MAN**

Caleb Andresen (#2659Y)  
PO Box 19006  
Sacramento, CA 95819-0006—USA  
stamper852@aol.com

**WHATZIT? COORDINATOR**

Richard Barnes (#2425)  
11715 123rd St NW  
Edmonton AB T5M 0G8—CANADA  
rtbarnes@shaw.ca

**MAIL BID SALE MANAGER**

Mike Crump (#2126)  
PO Box 580  
Whittier, CA 90608-0580—USA  
desoto1947@yahoo.com

**SWAP CIRCUIT**

**Program Coordinator** (send inquiries here)  
Randy Smith (#1111) (*address below left*)

**Large I Circuit Manager:**

Igor Malcevski (#2597)  
22702 Saddle Rd  
Leavenworth, WA 98826-9763—USA  
igor@premier1.net

**Large II Circuit Manager:**

Smokey Stover (#2538)  
610 N 1st St PMB 421  
Hamilton, MT 59840-2149—USA  
smokey1789@gmail.com

**Small/Definitive I Circuit Manager:**

Duncan Koller (#2154)  
(*see address at left*)

**Small/Definitive II Circuit Manager:**

Craig Grothaus (#2344)  
39 Crestview Rd  
Mountain Home, AR 72653-7837—USA  
grot@centurytel.net

**Super Circuit Manager:**

Bob Armstrong (#1392)  
(*see address at left*)

**CTO Circuit Manager:**

William Silvester (#1058)  
378C Cotlow Road  
Victoria, BC V9C 2G1—CANADA  
wgsilvester@shaw.ca

**USA Circuit Manager:**

Larry Veverka (#2363)  
935 University St  
Walla Walla, WA 99362-2342—USA  
larry.veverka@wallawalla.edu

**WEBMASTER**

Rick Simpson (#1703)  
HC 79 Box 52E  
Romney, WV 26757-9509—USA  
stampalumpages@gmail.com

To participate in an ISWSC program, contact the appropriate volunteer.

# Youth Exhibitors Win ISWSC Merit Awards

by Richard Rizzo (#2215)  
Director of Stamp Outreach

Congratulations go out to Jesse Chevrier (age 15) for being awarded an ISWSC Youth Merit Award medal for his exhibit, *Owls* (Figure 1), at the Minnesota Stamp Expo held in Crystal, Minnesota in July 2012.



Figure 1—Jesse Chevrier's award winning exhibit,  
*Owls*

Congratulations also go out to Alexandra Fillion for being awarded an ISWSC Youth Merit Award medal for her exhibit, *What a Princess Wants*, at the APS STAMPSHOW held in Sacramento, California in August 2012.

For those members who wish to recognize young collectors at your local stamp show, please review the criteria for our Youth Merit Awards on our web site, [www.iswsc.org](http://www.iswsc.org).

Please send address and collecting interest corrections to the Executive Director.

## Dues/Advertising Policy

### Dues Information:

Single/Dealer/Club 1 year membership: \$15.00\*

Single/Dealer/Club 2 year membership: \$27.00\*

Single/Dealer/Club 3 year membership: \$39.00\*

Youth (under 18) 1 year membership: \$12.00

\*Plus 250 large commemoratives for the Outreach Program or equivalent donation in U.S. funds.

Dues include six newsletters per year. You may pay for up to three years at a time. For an application or further information, send a SASE or an IRC to:

Dr. Joanne Berkowitz (#98)

ISWSC Executive Director

PO Box 19006

Sacramento, CA 95819-0006—USA

[joannebe@pacbell.net](mailto:joannebe@pacbell.net)

PayPal: [ExecutiveDirector@iswsc.org](mailto:ExecutiveDirector@iswsc.org)

### Advertising Policy:

For reasons of accountability, only members of the ISWSC, APS or ASDA may place ads. All ads dealing with philatelic concerns are acceptable. We reserve the right to edit out objectionable language. Advertisers are expected to respond to all inquiries, so be sure you can handle the responses before you offer to trade, buy or sell. If you have a bad result from answering an advertisement, contact the Editor. We will try to resolve the conflict.

### Display Rates (Camera Ready\*) per Insertion:

Full page: \$75.00

Half page: \$40.00

Quarter page: \$20.00

Per column inch: \$5.00

Six repeat insertions of the same sized ad for the cost of five ads (one free). We also offer a two-sided insertion for \$125.00 per issue.

\*Camera Ready means ready to paste up or scan and print. Reductions and typesetting extra.

### Classified Rates per Insertion:

First 30 words, including name, address and ZIP Code are \$3.00. Additional words are 20 for \$1.00.

NOTE: State abbreviations = one word; "P.O. Box 1234" = two words; ZIP Code = one word.

Make all checks payable to "ISWSC" in U.S. funds. Send text and payment for ads to *The Circuit* Editor (see address on page 2).

# How Many Stamps?

Continued from page 1

some limit themselves to stamps assigned major numbers (i.e. 21A rather than 21a using Scott's system); others include varieties with minor numbers. None go down to the "flyspeck" level.

Once you've answered the previous questions, got your catalog open and your counting hat on, it is surprisingly difficult to obtain an accurate total at a glance, even for major varieties of Regular/Commemorative stamps. For example, the numbering for a country may start at 1 and end at 100, but that doesn't mean there are 100 stamps. Listings are often

## QUANTITY OF 1840-1940 STAMPS

CATEGORY	NUMBER	PERCENTAGE
Overprints	41,766	42.0%
Commemoratives	11,046	11.1%
Officials	6,470	6.5%
Semi-postals	4,444	4.5%
Airmail	4,239	4.3%
Inverts	3,803	3.8%
Occupation	2,929	2.9%
Newspaper	886	0.9%
Parcel Post	709	0.7%
Bisects	505	0.5%
Tête-Bêche	416	0.4%
Special Delivery	356	0.4%
Military	347	0.3%
War Tax	263	0.3%
Registration	204	0.2%

NOTE: Categories are not exclusive. For example, a stamp which is both an overprint and an airmail are counted in both categories.

renumbered and some numbers previously used may be dropped. Or conversely, a newly identified issue might be given an intermediary designation to avoid a wholesale renumbering, so you could have both a 21 and 21A.

I suspect that many collectors reading this article would find it most convenient to use Scott. Unfortunately, as a resource for this project, Scott is perhaps the most difficult to work with as they split out

more than two dozen stamp types (i.e. semi-postals, military stamps, etc.) into their own sections with separate numbering under each country. Most other catalogs conflate many of these types into a single number range which makes counting much easier.

Of course, in an ideal world, our catalogs would be on computer in such a way that not only could we find out how many stamps there are, but could ask all manners of queries such as "How many stamps were issued each year on the day I was born?" or "What is the most common color used for stamps?" Unfortunately, if the catalog publishers have this capability in their databases, they aren't giving us the ability to ask such questions.

Or instead of counting the stamps yourself, you could let someone do it for you. My particular collecting interest is the first century of philately, so let's start there. The most detailed of these counts that I've found were compiled by Kent B. Stiles in a series of articles appearing in *Scott's Monthly Stamp Journal* in the 1920's, 30's and 40's. Although most of these are retrospectives of the previous year's stamps, there are two articles of particular relevance to us. The first covers 1840-1930 and the second 1840-1939/40. Stiles' aggregate based on the Scott Catalog was 99,347 for the years 1840-1940. Or more precisely, this figure is for May 6, 1840 through May 5, 1940—literally the first hundred years of philately. Combined with his number for the remaining issues of 1940 reported in an article published the following year, this brings the grand total for 1840-1940 to 100,689.

But Mr. Stiles doesn't stop there and proceeds to break down the total by categories, e.g. overprints, airmails, officially authorized bisects, commemoratives, etc. This along with other interesting statistics makes fascinating reading. Here are a few tidbits:

- 30,154 major and minor varieties were issued during the 19<sup>th</sup> century, only 181 of which appeared in the 1840's.
- There were fewer stamps issued between 1930-1939 than in 1920-29, over 19,000 fewer!
- Over 40% of all stamps from 1840-1940 were overprints. In 1918, overprints accounted for nearly 80% of all stamps.
- More commemoratives appeared in the decade of the 1930's alone than in all of 1840-1929.
- The most airmails (214) were issued in 1929.
- The most bisects (24) appeared in 1881.
- Virtually 1/20th of all stamps are invert (3,759—mostly inverted overprints, many from World War I).

Continued on page 10



# Whatzit—Knowledge

by Richard Barnes (#2425)  
Whatzit? Coordinator

At every meeting of the Edmonton Stamp Club, a member makes a 15 minute presentation. I want to share with our members what I got out of a recent presentation.

Every year at the summer meeting, we hold a special auction. One of the rules for submitting items to this auction is a minimum catalogue value of \$20. Joe was looking through his disposable stamps and found a set of Belgium 1914 semi-postal stamps, Scott #B28-B30 (Figure 1). The current Scott catalog value is \$84.50, however there is a footnote in the catalog about



Figure 1—1914 Belgium semi-postal stamps (Scott #B28-B30)

forgeries for this set. The Ithaca, New York stamp dealer selling these stamps had listed a catalog value of \$1.70 (1927). A check of an old Stanley Gibbons lists a catalog of approximately \$20. This set of semi-postals needs a second look.

The Serrane Guide states for this set of stamps that they are "Terribly common, if we judge by the number in circulation; however, their limited printing order has made them rare: 5-cent [green], 23,214; 10-cent [red], 14,650; 20-cent [violet & red], 8,663." This statement is followed by a lengthy discussion, a controversy between the printer of the stamps, the dealers who purchased the stamps and the experts. The matter was finally settled in the courts. The stamps "had been illegally manufactured by the printer himself".

The printer, using reconstructed plates, ran off a second printing of this stamp set. The sale of these stamps must have been lucrative because the printer proceeded to produce a third run. The stamp agents

referred to them as Type II and Type III. "One surprised agent alone had 200,000 copies on hand!"

"The moral of all this is that a stamp must always be subjected to carefully examination, irrespective of its origin, even though it may be a gift from one's own father, from a peer of the realm, or the King of England."

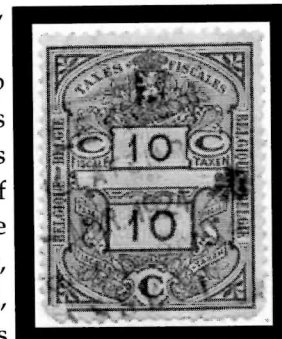
Back in 1927, every stamp collector was aware of this fraud. The 1927 list price for this set of stamps was a fair price of roughly 10% of the genuine set. Despite the passage of time, this evaluation has not changed, but the memory of the dealers and the collectors has changed.

If the dealer had not been using 102 cards preprinted back in 1927, would he have known that these stamps were not genuine? Would the buyer have the interest and knowledge to check if they are genuine? In my mind, there is a big difference in a seller's asking price of \$85 and \$8.50. No one alive now remembers this philatelic scandal.

Collecting habits change with time. Between the two great wars, virtually all stamp collectors had preprinted albums and they worked to fill the spaces. Then as today, the individuals' monetary resources were limited. I have recently been reading old thirties newspapers and philatelic club publications. There are numerous ads for what we now call space fillers, reprints, facsimiles, etc. They were (and still are) used, although many times unknowingly, to fill voids in collections. Past generations read and studied philately. They knew what they had and they assumed that the next generation of stamp collectors would read and study to become knowledgeable about the stamps in their collections. Is that assumption true for you?

It has been a good period of time for answers to the Whatzits. Whatzit 30.3.2 is Type A-3 in the (India) Native Feudatory States category for Faridkot in Punjab. The main script on the stamp is Urdu, but there is in the arc of the seal lettering which is Punjabi, akin to Hindi. The value remains unknown.

Next is Whatzit 30.3.3, showing a monk holding a child. "SAG" is an abbreviation for the St. Francis Guild. The St. Francis of Assisi Guild is an association connected to the religious order of the monastic Franciscans. This particular label was probably issued in the mid-1950's.



Whatzit 30.5.2



Whatzit 30.5.1

## Ventures in Printing—Part 22

### Pro Juventute Cantonal Coat of Arms Stamps

by Sandy Stover (#2325)

Editor's Note: This is a continuation of the series of articles adapted from a larger work on classic multicolored postage stamps currently being written by the author.

This present article continues a focus on *entirely relief-printed* classic multicolored postage (CMP) stamps. It has been the writer's intention, generally, to limit the scope of this series of articles to pre-World War I issues, but there are two large sets of CMP stamps—27 *Pro-Juventute* coat of arms semi-postals of Switzerland (relief-printed, 1918-30) and 17 *All-Union Agricultural Fair* regular issues of the Soviet Union (probably relief-printed, 1940)—that demand at least a smidgeon of attention, not only for the number of stamps involved, but for several questions that hover enticingly around their colorfulness.

#### The Bigger Picture

In an "introductory handbook" published recently by the American Helvetia Philatelic Society, it is stated that "the Pro Juventute are the longest-running and most popular stamps of Switzerland" (*Philately of Switzerland*, p.15). Of course, the Society is referring here to popularity among the Swiss general public as well as among stamp collectors throughout the world. And the reference is, obviously, not merely to the 37 coat of

arms stamps, but to *all* approximately 400 Pro Juventute stamps that have been issued from 1913 to the present. The coat of arms stamps are but a small portion, spanning only a thirteen-year period, of a century-long tradition that has included themes running from children (and their activities and stories) to heraldry, to regional costumes, landscapes, flowers, insects, animals, birds, toys, etc. (Figure 1).

"Pro Juventute" means "for the children" in Latin. Founded in 1912, the Pro Juventute Foundation was

originally a collaboration by child welfare agencies in order to treat and eradicate childhood tuberculosis ([www.thestampcollector.net](http://www.thestampcollector.net)). The Swiss postal service was enlisted by the Foundation to help raise money through the sale of charity stamps during the Christmas Holidays. A surtax portion of each stamp's total sale price is diverted to Foundation programs. Details and elaborations of the stamp program have changed over the past century, but the issuing of yearly Christmas-tide semi-postals continues to this day. Programs of the Pro Juventute Foundation have also changed over the past century, expanding to include a wide variety of counseling, financial, educational and other types of



Figure 1—Pro Juventute: Early to recent. Top row (left to right): Helvetia & Matterhorn, 1913 (first issue); Boy from Appenzell, 1915 (first child image); Canton of Uri, 1918 (first coat of arms). Middle row: Lake Engstlen & Mt. Titlis, 1929 (second landscape); Girl from Vaud, 1933 (first regional costume). Bottom row: Children on Swings, 2012 (most recent issue).

child welfare services.

Note: While Swiss support for Pro Juventute has always been enthusiastic, the history of the Foundation's programs is not unblemished. From the

1920's to the 1970's, a Foundation program removed gypsy children from their families, purportedly to protect them from nomadic lifestyles. This program was eventually shut down and the Swiss Federal Commission Against Racism has stated:

In Switzerland up until the 1970s, the declared policy aimed to eliminate the travelling lifestyle by taking children away from their families ("Children of the open road" project by the Pro Juventute foundation). Since then the state has made the first moves for the protection of the travelling culture and supported organizations such as the "Radgenossenschaft der Landstrasse" (wheel community of the open road). But even today, whether they are on the move or settled, the Yenish, Roma or Sinti people are faced with a large amount of hostility and prejudice (<http://www.ekr.admin.ch>).

### *Darlings of the Classic Semi-Postals*

Still, it is the Swiss coat of arms stamps that have been *particularly* popular amongst stamp collectors. And this is no small occurrence given the general negativity of philatelic leadership toward "charity" stamps—a negativity that remained strong during the time period in which the coat of arms stamps were being issued (as discussed in an earlier article in this series—Stover, "Multicolor and Philanthropic Stamps", Mar/Apr, 2011).

On the positive side, for example, William Bork touted the Swiss coat of arms stamps in a 1927 article in *Scott's Monthly Journal*, emphasizing their value as sources of *history*:

The main postal issues of [Switzerland] have some claim to historical value, but it is in the semi-postal issues that one can find the greatest wealth of background upon which to base a study of the country's history. On these stamps there are shown twenty-five different shields, in addition to a number of copies of the federal shield. Behind each one of these is an interesting *history*, if one can search it out (*Scott's Monthly Journal*, April, 1927, p. 62; the article was reprinted in *Mekeel's Weekly Stamp News*, June 13, 1927).

But the early-on admiration went beyond historical—to aesthetic:

- (1) In 1923, five years after introduction of the coat of arms stamps, the ever-attentive philatelic commentator Fred J. Melville wrote:

With the "Pro Juventute" series of Christmas, 1918, there was instituted a new artistic theme at the hands of the Bernese heraldic artist, Rudolf Mürger. From this time onwards we get a succession of issues in beautiful heraldic designs of the arms of the Cantons, in their correct colours, forming a new and attractive link between Philately and Heraldry (*Mekeel's Weekly Stamp News*, January 20, 1923, pp. 41-42 [originally in *Stamp Collectors' Fortnightly*]).

- (2) "The stamps are as usual fine productions of the Berne mint and a charming addition to the stamp album."—this a summary by *The American Philatelist* about the 1924 coat of arms set (Scott B29-32; *The American Philatelist*, January, 1925, p. 234).
- (3) A year later, the same journal described the 1925 coat of arms edition of four stamps (Scott B33-6) as "highly decorative" as well as "historically interesting" (*The American Philatelist*, January, 1926, p. 254).
- (4) In his recommendations in the "Junior Stamp Collector" section of *Linn's Weekly Stamp News*, Montgomery Mulford, after commenting (in surprise?) that "there seems to be a growing popularity for semi-postals", noted that collectors can do "their bit" by purchasing them, "for they also, as regards the Swiss pro-juvenite [sic] issues especially, are very attractive and colorful" (*Linn's Weekly Stamp News*, June 17, 1929, p. 350).
- (5) Another of the editors at *Linn's* (Ralph Kimble?), in a brief insert, noted that the three 1930 coat of arms specimens (Scott B53-5) "are gorgeous lithographs [?] in three and four colors" (*Linn's Weekly Stamp News*, December 30, 1930, p. 119).
- (6) And Earnest Kehr, writing later (1947) about the *entire* Pro Juventute series—that, unlike many other semi-postal projects, "the cause is so worthy"—probably has the coat of arms stamps particularly in mind when describing the entire series as "outstanding examples of graphic art" (Kehr, pp. 78-79).

All of this stands in contrast to the prevailing *general* opinion about semi-postals, at least as that opinion was estimated by John Luff in this 1928 statement: "Dislike of this class of stamps is steadily increasing among stamp collectors and the non-

# Ventures in Printing

Continued from page 7

collecting public seldom show much interest in them" (*Scott's Monthly Journal*, August, 1928, p. 179). The Pro Juventute coat of arms stamps thus seem to be exceptions—*darlings* among an unappreciated class of stamps. Even Robson Lowe avoided attacking them. In his infamous "Chamber of Horrors" he combined in one illustration two stamps of Ethiopia and two Swiss Pro Juventute (but *not* coat of arms) stamps—all under the heading "Swiss Sinfulness" (so described because all four stamps had been printed in Bern, Switzerland) (Figure 2). His comments, loaded with the mocking humor of a true classicist:

We may not light-heartedly blame the Ethiopians for the shocking vulgarity of the stamps printed for them in Bern in 1919 and 1928. When the Ethiopians first had stamps made in Paris by E. Mouchon in 1894 the result was excellent. Therefore we must blame the Swiss firm for foisting this poor stuff on the Ethiopians.

And, indeed, a glance at *some* of the Swiss "Child Welfare" stamps of 1928, 1929 and 1937, as well as the 1939 stamps for the Zurich Agricultural Exhibition, may convince us that postage-label designers display at least their fair share of bad taste to Switzerland (Lowe, pp. 90-1; italics added).

Does the word "some" suggest that *others*—namely

the Pro Juventute coat of arms of 1928—were, well, maybe not such "horrors" after all?

## Detailed Thematic and Graphic Integration

The graphic art of the Swiss coat of arms stamps is indeed "outstanding", as noted by Kehr, but not merely because the shields themselves are rendered so colorfully. It is the unique border (or vignette frame) surrounding each shield that makes for a very impressive total effect. E. J. Rawnsley, writing from the perspective of historical meaning (rather than graphic art), warned against overlooking the coat of arms borders:

Possibly no other Swiss stamps convey in such a small



Figure 2—Robson Lowe illustration "Swiss Sinfulness", depicting four Swiss-printed stamps. Clockwise, from left: Ethiopia, 1919 (Scott 122); Swiss Pro Juventute, 1937 (Scott B88); Ethiopia, 1928 (Scott 158); Swiss Pro Juventute (first landscape), 1929 (Scott B49).

space so much of the country's historical and industrial activities. To the lover of heraldry they constitute some of the finest examples on stamps, produced at a time when multi-colored printing was not so advanced as it is today, while many collectors overlook the implications of the background [border] designs. Many bear allusions to historical events, while others indicate some of the principal industries (*Tell*, January, 1978, p. 7). [Besides Rawnsley, Marion Carne Zinsmeister (*The Helvetia Bulletin*, January-November, 1949) and William Bork (*Scott's Monthly Journal*, April, 1927, pp. 62-64) have written interpretations of the heraldry and borders on Swiss coat of arms stamps.]

The present writer is not a "lover of heraldry" and will not attempt that sort of history here, but he does want to draw attention to the border themes that so enhance the graphics of these coat of arms stamps. (There are a total of 37 Pro Juventute coat of arms



SCOTT #	YEAR	CANTON	BORDER THEME	SIGNIFICANCE <sup>1</sup>
B10	1918	Uri	Apples transfixed by arrows	Story of William Tell
B11	1918	Geneva	Necklace of pearls	Geneva as center of jewelry trade
B12	1919	Nidwalden	Mace—like weapon	Fighting resolve of the Swiss people
B13	1919	Vaud	Grape bunches	Vaud as wine country
B14	1919	Obwalden	Halberds (medieval weapon)	Fighting resolve, etc.
B15	1920	Schwyz	Raised hand with three fingers	Rütli oath of independence
B16	1920	Zürich	Cogwheels	Zürich as center of commerce and industry
B17	1920	Ticino	Bricks	Prominence of building trades
B18	1921	Valais	Fruit clusters	Prominence of orchards and vineyards
B19	1921	Berne	Wheat	Berne as “bread basket” of Switzerland
B21	1922	Zug	Fish and waves	Fish found only in Lake Zug
B22	1922	Fribourg	Mitres and rosaries	Official seat of regional bishop
B23	1922	Lucerne	Sailing ships & rosaries	Lake Lucerne & Catholicism
B25	1923	Basel-Stadt	Crozier	Basel’s connections to Catholic Church
B26	1923	Glarus	Edelweiss ornament	Mountains or printed fabrics
B27	1923	Neuchâtel	Watches	Neuchâtel as center of watch industry
B29	1924	Appenzell (In)	Cow-bells	Appenzell Innerrhoden as cattle-raising area
B30	1924	Solothurn	Banners & mitres	St. Urs & residence of Bishop of Basel
B31	1924	Schaffhausen	Grape bunches	Schaffhausen as wine country
B33	1925	St. Gallen	Embroidery motifs	St. Gallen as a center of embroidery
B34	1925	Appenzell (Au)	Embroidery motifs	A. Ausserrhoden as center of embroidery
B35	1925	Grisons	Maple leaves	Commemoration of canton unification
B37	1926	Thurgau	Apples & pears	Prominence of orchards
B38	1926	Basel-Lands.	Ribbons	Prominence of ribbon industry
B39	1926	Aargau	Carrots	Prominence of agriculture
B45	1928	Lausanne	Grape bunches	Lausanne as wine country
B46	1928	Winterthur	Anchors	Prominence of marine engine industry
B47	1928	St. Gallen (city)	Symbols of learning	Prominence of education
B53	1930	Fribourg (city)	Symbols of learning, industry and religion	
B54	1930	Altdorf	Gessler’s hat; Tell’s apple & arrows	Swiss history
B55	1930	Schaffh. (city)	Salmon	Prominent Rhine River fish

<sup>1</sup>based on Rawnsley and Zinsmeister

**Table 1— Pro Juventute Cantonal and Cantonal/City coat of arms stamps**

stamps. The listing in Table 1 includes 31 cantonal and cantonal/city stamps, of which 25 are multicolored, while six are bicolored. It does not include six stamps featuring the Swiss coat of arms, of which two are multicolored and four are bicolored.)

This may be more detail than the reader wants, but it demonstrates the high degree of individualized

thematic integration that occurs on each coat of arms stamp. Of course, *thematic* integration is not the same as *graphic* integration. Figure 3 (on page 24) demonstrates, however, that graphic integration is another strength of the coat of arms stamps. Shield, fruit-clusters and

**Continued on page 22**

# Executive Director's Report

by Dr. Joanne Berkowitz (#98)

**I** have been busy entering data for our 27 new members who have joined since the beginning of August. Welcome to the ISWSC! This influx of members is in no small part due to the efforts of our new President, **John Seidl** (#1646). He has been on a one-man membership campaign and has brought in 19 new members as of the beginning of October. This is being done through letter writing. Contact John for a copy of his nicely written and brightly illustrated letter which he annotates with a short handwritten sentence to each prospective member. Send a few to your stamp collecting friends, members of other clubs that you belong to or anyone else you think might be interested. While we have tried letter writing without much success in the past, John sweetens the deal by offering to pay the new member fee of \$2 and donate the 250 stamps. I am amazed and delighted at the success of this strategy. Thanks to John for his efforts on our behalf!

Thank you also to **Mike Crump** (#2126) and **John Baumert** (#1246). Mike stepped up (when no one else would) to take on the job of President—while also running the Mail Bid Sales, a rather time consuming program. John has ably run the Sales Circuit for the last several years. Without members like Mike and John, this club could not exist. Consider volunteering to do something. It can be as simple as sending letters or counting ballots during an election or more intensive like helping with swap circuits, serving on the Board or

even starting up a new program that you think would complement the club's offerings.

I am co-chair for Sacapex, the Sacramento Philatelic Society's annual stamp show. I am truly amazed at all the stuff that is required to get a show under way. From hall rental to contracts with security and caterers, seeking exhibitors, organizing the dealer bourse and chasing the dealers down for their booth payments and contracts, sending postcards about the show to a couple thousand people on the mailing lists (APS list and our own), designing and creating a show cachet and not the least, organizing volunteers to work the two days of the show—it is a huge job. It takes a lot of hours and a lot of people and we are fortunate to have an active club with supportive members to help out.

The APS show in Sacramento was a huge membership builder for us and many of the folks we have signed up are already showing up at club meetings and enjoying the benefits of a strong active club.

For people who do not have access to a good local club (and even for folks that do), the ISWSC provides a stamp collecting "home base" for worldwide collectors. Take advantage of the programs available and check the roster for folks with similar interests. Don't get discouraged if any one contact does not pan out. I have made many friends that I have never seen in person although I have communicated with them in writing or online for years. While stamp collecting is often thought of as a solitary hobby, having stamp friends out there can immensely increase your collecting pleasure.

## How Many Stamps?

Continued from page 4

- There were 2,843 occupation stamps with World War I and its aftermath accounting for 2,078 of these.
- The first semi-postal appeared in 1895 but more than half of semi-postals were issued in the 1920's, which Stiles opines "supports philately's suspicion that government officials are capitalizing on collectors' willingness to absorb new issues from whatever sources and for whatever reasons for printing".
- The earliest *tête-bêche* appeared in 1849. The record was 27, in 1921.
- Commemoratives account for 4,447 stamps,

increasing from around 600 stamps during the entire 19<sup>th</sup> century. (Stiles notes the popularity of collecting only commemoratives. Some of you may remember that Scott published a worldwide commemorative album as well as one dedicated to airmails.)

- The number of stamps issued per decade increased from an average of 18 per year in the first decade of philately to 2,000 or more. (Even as late as 1940, the number of stamps issued (2,177) was still in this ballpark.)

There have been several more recent attempts to count the first 100 years of philately with results ranging between 77,000 and 91,000 stamps. Quite a variation. But it shows how the total will change

Continued on page 23

# Mail Bid Sale #51 ~ 5000<sup>th</sup> Lot Contest

**H**ello MBS participants! Another milestone has been reached by your Mail Bid Sales – the 5000<sup>th</sup> lot to appear in the sales. This occasion prompted me to come up with a contest. Here is how it works: The winning bidder on the 5000<sup>th</sup> lot will receive that lot for free and will also receive a \$100 credit to be used for any Mail Bid Sale expense. The kicker: the 5000<sup>th</sup> lot is known only to the MBS Manager and is otherwise unidentifiable. So, bid often, bid well, and you could be the winner. Here are some hints: It is a single-country lot. It is not a Bargain Bin, Worldwide, or Club-Owned lot. One last hint: The stamp(s) in this lot are listed in Volume 3 of the Scott Standard Postage Stamp Catalogue (Countries of the World G-I). Have fun! ~ Mike Crump

## ISWSC MAIL BID SALE #51 – Closing January 31, 2013

Lot #	Description	Minimum Bid
1	USA. Three U stamps: #147, 184, 213. CV \$4.50.	\$1
2	USA. #221, U, target cancel, perfs touch design on 2 sides. CV \$9.	\$3
3	USA. Four U stamps: #264, SE, F/VF, HC; 268, F/VF, HC; 247, heavy bar cancel, F/VF; 300, F/VF. CV \$7.10	\$3
4	USA. George Washington 2¢ "Molly Pitcher" overprint, #646, MNH; also J89, 1¢ postage due, MNH PNB.	NMB
5	USA. #673, Martha Washington Nebraska overprint, MLH, VF. CV \$17.50.	\$5
6	USA. Jefferson Memorial, #1510a, MNH, 3 blks: "New York" precancel, one PNB, one "Mail Early" blk, one "Use Zipcodes" blk.	\$10
7	USA. #1623Bc, bklt: 10 x 9.5 perf w/"rare" pair of 9¢ & 13¢. CV \$22.50. Nice buy!	\$7.50
8	USA. #1909, U, bklt stamp (\$9.35 Eagle & Moon) – creased/wrinkled. CV \$15.	\$2.50
9	USA. Ameripex '86, Presidents S/S's, sheets of 9 stamps: #2216, 2217, 2218, 2219, MNH. CV \$30.	\$8
10	USA. World War II 1941-1945, complete sheets (2 S/S w/10 stamps per sheet), MNH: #2559, 2765, 2697, 2838, 2981. These are so beautiful – I wish I hadn't used mine for postage! CV \$55.50.	\$15
11	USA. #J4, pen cancel (?), F/VF, small repaired tear. This 130 year old stamp looks good face side. CV \$70 (if perfect). How about it?	\$10
12	USA. #J15, MNH, F/VF. Crease across middle, otherwise great looking stamp. '11 CV \$200. How about this?	\$20
13	USA. 1½¢ George Washington postal envelope, unused, #U535. CV \$5.	\$2
14	USA. Set of 4 Cowboys of the Silver Screen postal cards, M, #UX597-UX600. CV \$6.	\$1
15	USA. National Parks types of postal cards, #UX601-UX610, M & pristine. '11 CV \$15.	\$3
16	USA. Set of five 29¢ postal cards: Pixar Films, "Say Hello", M, #UX622-UX626.	\$1.50
17	Confederate States of America. #6, U, pair, HH, circular cancel – I wish they were still on cover! Cancel reads "Aug 4" or Aug 24". CV \$75.	\$40
18	Confederate States of America. #11a, Unused, crazed gum, H, slight crease(s). CV \$45.	\$20
19	Confederate States of America. #12d, MH, poor gum, dark blue. '11 CV \$18.	\$9
20	Confederate States of America. #13b, M, NG, dark green. Good appearance. TH covered by old hinge. CV \$45.	\$10
21	United Nations New York. #150, \$1 United Nations Emblem, MNH; also, Geneva 14, 10 Francs, Peace, Justice & Security, MNH.	\$2
22	United Nations Geneva. MNH, quality stamps: #162, 163, 164, 165-166a, 167-168, 169-170, 173-174, 175, 176-177. CV \$19.15.	\$7
23	Afghanistan. Club Owned. Small Collection: #616 (x2), 617 (x3), MH; 607, 608, MH; 627-631, MH; 640, 641, MNH; 730, 857, MH; C26-C28, cpl set, MH; C43-C48, MH. Also, 2 S/S (one perf, one imperf), see note in Scott after 548 (CV \$4.50); 1 S/S, see note after C28 in Scott (CV \$5); 1 S/S, 6 Wildflowers (dated 1997), MNH, no valuation by Scott. There's some value here but hard to estimate for this war-torn country.	NMB

Lot #	Description	Minimum Bid
24	<b>Aitutaki.</b> Club Owned. #135-142, MNH, cpl set; 276-279, MH, cpl set, disturbed gum; 489-498, MNH (short set); B18b (S/S of 8), MNH; pairs B12a, B14a, B16a, B18a. CV \$18.80. Wow!	NMB
25	<b>Aitutaki.</b> Club Owned. Highest value of 1981-82 Bird set overprinted as official: #O41, MH, F/VF. CV \$32.50. May be the buy of this sale!	NMB
26	<b>Algeria.</b> Club Owned. Flowers. MNH cpl set, #479-481. Also, 4 MNH singles: 864, 865, 1166, 1167. '11 CV \$5.45.	NMB
27	<b>Angola.</b> Club Owned. #613, MH; 956, MNH, S/S (Hyena); 960, MNH, S/S (Hummingbird); 1081a-d, MNH, mini sheet of 4 (Basketball); unknown #, CTO, (Tortoises, 5 diff); RA7, U; RA11, RA12, RA13, RA19, RA20, RA21, RA27-RA30, MNH; RA26, MH. '11CV \$14.95. (Tortoises too slow, not incl in CV).	NMB
28	<b>Anguilla.</b> Club Owned. Singles, #223*, 265**, 370a, S/S of 4 (Flowers, Plants, Christmas 1979), MNH; 444c** (bklt pane of 4); 445a**, S/S of 2 + label; 446c** (bklt pane of 4). Last 3 items Charles & Diana Wedding. CV \$14.	NMB
29	<b>Ascension.</b> Club Owned. Charles & Diana Royal Wedding, #294-296, MNH, cpl. CV \$1.25.	NMB
30	<b>Australia.</b> Early Group, 27 mostly U stamps. As w/most older collections, mixed condition: #27, 35, 148 ("Queensland" cancel), 21, 24 "Melbourne/Victoria" cancel, 25, 26 (x2), 27 "Freemantle" cancel, 31a, 47, 72, 75, 170 (some rough perfs, crease), 170a, 171, 171a, 172a (x2), 175a (x2), 176, 187 "Sydney" cancel, small tear; 189; 195 & 196, MNH. CV \$178.90.	\$45
31	<b>Australia, Argentina.</b> Australia #761, 805; Argentina 1495, 1498, U. CV \$2.70.	NMB
32	<b>Australia.</b> #1535 (\$10 denomination), U, corner clipped; also, 1981, U. CV \$13.40.	\$2
33	<b>Australia.</b> #1729B, MNH, S/S, Sailing Ships. CV \$6.	\$3
34	<b>Austria.</b> 14 U stamps: #958, 959, 963, 1010, 1014, 1023, 1033-1035, 1044, 1059, 1084, 1153, 1158. CV \$4.55.	NMB
35	<b>Austria.</b> Large U Recent (1980s-1990s): #1296, 1327, 1413, 1416, 1428, 1439, 1440, 1477, 1480, 1485, 1518, 1526, 1527. CV \$7.50.	\$3
36	<b>Azores.</b> #RA11, U, F/VF. CV \$1.10.	NMB
37	<b>Bahamas.</b> #158-173, U, VF. Excellent cpl set. CV \$28.50.	\$10
38	<b>Bahamas.</b> #158-172 (173 missing), U, F/VF. CV \$18.50.	\$6
39	<b>Bahamas.</b> Post Office fresh bklt of 8 stamps each: #159, 160, 161. (There are blks of 4 x 2 of each of the 3 diff stamps.) See note in Scott after 161. Hard to find bklt from 1954. CV \$32.50.	\$8
40	<b>Bahamas.</b> Partial U set, 10 values: #230-235, 237-239, 241. CV \$3.70.	NMB
41	<b>Bahamas.</b> #230-244, U, cpl set, VF, surcharged. '11 CV \$22.13.	\$8
42	<b>Bahamas.</b> #322 (11c value), MNH, bottom blk of 4. CV \$11.	\$3
43	<b>Bahamas.</b> Butterflies. #370-373, M, HR, cpl set of 4. CV \$5.75.	\$2
44	<b>Bahamas.</b> Butterflies. #373a, S/S of 4 stamps. CV \$12.	\$4.50
45	<b>Bahamas.</b> Economic Diversification. #374-377, MH, cpl set; 377a, S/S of 4 stamps (374-377), MNH. CV \$3.10.	\$1
46	<b>Bahamas.</b> Queen Elizabeth, 25 <sup>th</sup> Ann, #405a, S/S, MNH (402-405). CV \$1.50.	NMB
47	<b>Bangladesh.</b> Club Owned. Flowers, MNH: #490-495 (missing 493). CV \$9.	NMB
48	<b>Barbuda, Brazil.</b> Barbuda #185, MNH, Lobster; Brazil 2335-2337, MNH, Hummingbirds; 2368, MNH. CV \$5.55.	\$2
49	<b>Bermuda.</b> #425, LC. CV \$1.75.	NMB
50	<b>British Honduras.</b> #182-186, Birds, Self-Government (1964), MNH, cpl set. CV \$3.50.	\$1
51	<b>British Indian Ocean.</b> #48-49, MNH, QE II & Prince Phillip, 25 <sup>th</sup> Wedding Ann. CV \$2.50.	NMB
52	<b>Burkina Faso (Haute Volta).</b> Great opportunity to get into a new country (or continent). Very reasonably priced country to collect. Approx 115 stamps in this lot, some MH, more CTO/U, #1//679, some dues & airs. Mostly large & colorful. CV \$75.	\$20
53	<b>Burundi.</b> Group A: U & CTO, large & colorful, approx 60 stamps, #141//278, some semi-postals & airs. CV \$13.65.	\$5
54	<b>Burundi.</b> Group B (diff from other groups). Beetle Invasion, Classic Artwork, Sapporo '72 Olympics: approx 55-60 mostly CTO stamps. Lots of fun, #307//366, semi-postals, airs. Large & colorful. CV \$12.80.	\$3



Lot #	Description	Minimum Bid
55	<b>Burundi.</b> Group C (diff from other groups). Interpol Ann, Olympics, Butterflies, Flowers, Soccer, etc. Approx 45 large colorful CTO stamps: #405//459. C158//C197. Lots of fun for a small asking price. CV \$10.90.	\$2.50
56	<b>Burundi.</b> Group D (diff from other groups). Montreal Olympics, Artwork, Wildlife, Brothers Grimm, etc. Approx 35 CTO stamps: #459A//526, C244-C246, C262. CV \$21.	\$8
57	<b>Burundi.</b> If you liked Groups A-D above, these are 100 more, CTO, mostly diff from the other groups.	\$10
58	<b>Burundi.</b> Lots of African fun, Sports, Animals, Culture: #479A-D, 480B-C, C221A, B, D (Wildlife); 202-206, 226-227, 229-232, C36-C40, 5 imperfs; 95-100, 134-140*, 88-94, 88A-94b. Mostly CTO, some cpl sets. Very interesting & affordable. CV \$20.85.	\$7
59	<b>No Lot.</b> What? Not again!	
60	<b>No Lot.</b> Oh, my gosh, what a dunderhead!	
61	<b>Canada (Newfoundland).</b> National Savings Stamp, #NFW3, MNH, VF. Value \$40.	\$25
62	<b>Canada (Newfoundland).</b> Unusual & seldom seen: Imperf pair of Cigarette Import Tax Stamps, #TB51, Unused. Value \$50.	\$30
63	<b>Canada.</b> U: #35, 41, 110, 176, 272, medium cancel/LC. CV \$21.85.	\$6
64	<b>Canada.</b> #203, XF, MLH. CV \$50.	\$25
65	<b>Canada.</b> #225, MLH, XF. CV \$30.	\$15
66	<b>Canada.</b> #494, Blk of 4, MNH, XF. CV \$12.50.	\$5
67	<b>Canada.</b> #498, MNH, blk of 4, F/VF. CV \$12.50.	\$5
68	<b>Canada.</b> #539, 1602, 2374, 2375, U. CV \$1.95.	NMB
69	<b>Canada.</b> #1237-1240, MNH, blk of 4. CV \$4.	\$2
70	<b>Canada.</b> #2156, MNH, Champlain S/S, pane of 2, #2156 & 2 USA, #4074a, w/bar code (see note in Scott). W/bar code sold only by Canada Post (USPS w/o bar code). CV \$8.50.	\$3
71	<b>Canada.</b> First 10 issues of 2012, U. Owner says one is missing. 10 stamps total, too new for my Scott. Be the first!	\$3
72	<b>Canada.</b> Dragon, also 2 Diamond Jubilee, MNH, issued 1/16/12 – too new for my Scott. Face value \$2.80.	\$3
73	<b>Canada.</b> MNH singles on original backing (too new for my Scott). Canadian Wildlife (3): Raccoons, Caribou, Moose. Also, John Ware, Viola Desmond.	\$11
74	<b>Cape of Good Hope.</b> #66, U, F/VF, medium cancel/LC. CV \$8.25.	\$3
75	<b>Central African Republic.</b> #C4, MLH, F/VF. CV \$8.25.	\$3
76	<b>Central African Republic.</b> #CB1-CB3, MNH, VF, cpl set. CV \$7.15.	\$3

**Abbreviations:**

& = And	DUP = Duplicate (s)	NG = No Gum
+ = Plus	EST = Estimate (d)	NMB = No Minimum Bid
// = Incomplete	F = Fine, off center, but perfs	OG = Original Gum
ADDR = Address (ed)	don't touch design	PNB = Plate Number Block
ANN = Anniversary	FD(C) = First Day (Cover)	RET = Retired, Returned
APPROX = Approximate (ly)	G = Good, perfs cut into design	SE = Straight Edge
APS = American Philatelic Society	HBO = Held by Owner	SON = Socked on the Nose
BKLT = Booklet	HC = Heavy Cancel	cancel
BLK = Block	HH = Heavy Hinge	S/S = Souvenir Sheet (s)
BOB = Back of Book	HR = Hinge Remnant	TH = Thin
CAT = Catalogue (d)	ID'd = Identified	U = Used
COMMEM = Commemorative (s)	INCL = Include (s) (ed)	UNADDR = Unaddressed
(IN)CPL = (In)Complete	LC = Light Cancel	VF = Very Fine, wide margins
CTO = Cancelled to Order	LH = Light Hinge	VG = Very Good, perfs touch
CV = Latest Scott Catalog Value	M or * = Mint	design
(or year listed)	MH = Mint Hinged	W/(O) = With(out)
DEFIN = Definitive (s)	MLH = Mint Light Hinge	WMK = Watermark
DIFF = Different	MNH or ** = Mint Never Hinged	XF = Extra Fine

Lot #	Description	Minimum Bid
77	<b>China (Peoples Republic).</b> Useful group of 20 postally U stamps, ID'd in dealer cards: #129, 278-280, 324, 381, 498, 617, 781, 1016, 1021-1023, 1029, 1030, 1035, 1037, 1126, C9, 5L28. CV \$41.80.	\$15
78	<b>North China.</b> Under Japanese Occupation, 1945. Partial sheets, M, issued w/o gum: #8N115 (97 stamps in 2 partial sheets); 8N116 (44 stamps in one partial sheet); 8N117 (94 in two partial sheets & 44 cancelled in one partial sheet). Appears to have the "Hwa Pei" (North China) overprint. Could be a lot of total CV here.	NMB
79	<b>Republic of Congo, Chad.</b> Republic of Congo #CB1-CB3, MNH, VF; Chad CB1-CB3, MNH, XF, (yes, correct Scott #s). Cpl set. CV \$8.20.	\$3
80	<b>Cook Islands.</b> #161, U; 254-255, 170-173, MH. CV \$3.20.	NMB
81	<b>Cuba.</b> Four early stamps, U, pen cancels: #55, 59, 68, 69. They show some age – some short nibs, a pulled corner, etc.	NMB
82	<b>Cuba.</b> #69//170. 24 diff early stamps (from 1876-1898 era), mounted on old circuit sheet. 20 MH, 1 NG, 4 U. CV \$16.75.	\$5
83	<b>Cyprus.</b> #167, 169, 170, MH; 170, 178, 186-190, 192, 193, U on-paper. CV \$6.40.	\$2
84	<b>Cyprus.</b> U on-paper, ID'd on dealer sheets: #180, 186, 188-190, 189-193, 192-193, 194, 195, 199, 200, 208 (x2), 214. CV \$27.95.	\$8
85	<b>Cyrenaica.</b> #B10, U, crease; B11, MNH. CV \$2.	NMB
86	<b>Czechoslovakia.</b> U: #3, 5, 15, 16, 20, 27, 29, 30, 31, 33, 36, 39, 41-44, 46. CV \$3.70.	NMB
87	<b>Czechoslovakia.</b> #1740, 2704, 2929, MNH. CV \$5.20.	\$2
88	<b>Dahomey.</b> Time to get into Africa! Prices for Africa are on the increase. Here's a mini-collection of more than 110 stamps, M & U, #42//274, C6//C135, J9//J39. Plenty of value. CV \$62+.	\$30
89	<b>Equatorial Guinea, Guinea.</b> Equatorial Guinea: Motorcycle Aces, set of 16 in se-tenant blks of 8 diff values, issued 7/22/76, cpl set, #76130-76145, MNH. Also, Guinea 350-354, C64, cpl set. CV \$18.80.	\$9
90	<b>Faroe Islands.</b> #36-38, MNH, cpl set; 331a, cpl bklt; 351a, cpl bklt. CV \$35.05.	\$15
91	<b>Fiji.</b> Cone Shells (1987): #564-569. CV \$12.	\$4
92	<b>Finland.</b> #856a, strip of 5, cpl set, MNH. CV \$4.25.	\$2
92A	<b>Finland.</b> U Group of 11 Defins: #316, 319, 321, 323, 838, 839, others. Common stamps. CV \$2.20.	NMB
93	<b>France.</b> #69, 84, U. #69 has some rough perfs, clipped perfs (top). CV \$25.50.	\$7
94	<b>France.</b> #84, U, LC, F. CV \$7.50.	\$2
95	<b>France.</b> #102, U, LC/medium cancel, clipped corner, pulled perf. CV \$32.50.	\$4
96	<b>France.</b> #311, MLH; 312, MNH. CV \$42.	\$20
97	<b>France.</b> #335, MLH; C19, U, "Paris" cancel; C23-C29, C30, C37A, C39, C41, C46, U, LC. CV \$3.30.	NMB
98	<b>France.</b> #330-331, MH, F/VF. CV \$7.40.	\$3
99	<b>France.</b> #337, MNH, F/VF. CV \$15.	\$6
100	<b>France.</b> U: #682, 809, 858, 862, LC, F/VF. CV \$14.90.	\$5
101	<b>France.</b> #B147a, MNH (vertical pair #B147-B148+albino impression). CV \$22.50.	\$11
102	<b>France.</b> #C5, U, medium cancel "Diplomate". CV \$4.	\$2
103	<b>France.</b> UNESCO officials: #2O29-2O38, 2O47-2O48, MNH, XF. CV \$13.80.	\$7
103A	<b>Gabon.</b> Aviation Pioneers sheet/strip of 4, #C104, MNH. CV \$18.50.	\$9
104	<b>Gambia, Gold Coast.</b> Gambia #129-131, 153, 168, MLH; Gold Coast 11-13, 25, 61-64, U, F/VF or better. CV \$3.45.	NMB
105	<b>Ghana.</b> #39-41, MNH, blks of 4 (each stamp), cpl set(s). CV \$3.20.	\$1
106	<b>Ghana.</b> U: #49, 51, 53, 55, 66, 76; J1-J5, MH; J6-J10, MNH. CV \$3.45.	\$1
107	<b>Germany (Bavaria).</b> #J10, U, good circular cancel. CV \$2.40.	\$1
108	<b>Germany.</b> #32, 33, U, LC, (32 has a pulled corner perf). CV \$19.50.	\$6
109	<b>Germany.</b> Ret APS sales book. 50 mostly U stamps, #37//1222. Best: 37, 39, 46, 47, 48, 49, 53, 59, 60, 67, 81, 105, 125, 361, 362, 461, 462. All ID'd. CV \$48.	\$10
110	<b>Germany.</b> #93, 338, 345, U. CV \$12.	\$4
111	<b>Germany.</b> #113, 114, 114a, 114b, 338, U; B271, MNH. Also, DDR 409, U. CV \$8.75.	\$4
112	<b>Germany.</b> #115, 116, U. CV \$12.75.	\$3

Lot #	Description	Minimum Bid
113	<b>Germany.</b> #505, U, LC, F/VF; B186, U, medium cancel, F/VF. CV \$3.75.	\$1
114	<b>Germany.</b> #1417, 1428, B628-B629, MNH, VF. CV \$5.30.	\$2
115	<b>Germany.</b> Semi-Postals. #B177, B178, B180-B182, U; B218-B220, B222, B225, B226, B228, B229, MNH. CV \$6.95.	\$3
116	<b>Germany.</b> Semi-Postals: cpl U set of 12, #B218-B229. CV \$18.05.	\$8
117	<b>Germany.</b> Occupation. U. #8N13, 8N26, 9N4, 10N31, 10N36, 10N71, 10N72, 10N98. CV \$14.30.	\$6
118	<b>Germany (DDR).</b> 1954-1971 era, all MNH, some dup, some incl sets. Singles, pairs, S/S, sets, sheets. Commem, semi-postals. A good start on collecting this "dead" country. CV \$58.90.	\$18
119	<b>Germany (DDR).</b> 1972-1974, all MNH, some dup, incl sets, strips, sheets, S/S, commem, semi-postals: #1370-1373, 1378-1383, 1384-1387, 1411-1416 (sheet of 6), 1417-1422 (sheet of 6), 1430-1443A, 1453-1460, 1522-1527, 1533-1540, 1558-1561, 1584 S/S, 1592 (sheet of 4), 1593 (sheet of 8), B166-B167. CV \$72.30.	\$24
120	<b>Great Britain.</b> #96, 2 shilling 6 pence lilac, U, HH, VF centering, medium cancel/H.C. I don't see this one very often! CV \$150.	\$65
121	<b>Great Britain.</b> #129, U, small tear top, couple short perfs, medium cancel. CV \$22.50.	\$2.50
122	<b>Great Britain.</b> #130, U, F/VF, good "Liverpool" cancel. CV \$22.50.	\$5
123	<b>Great Britain.</b> #133, U, VF, clear cancel "West Central District MR 25.04". CV \$35.	\$9
124	<b>Great Britain.</b> #134, U, HC, "Glasgow" cancel. CV \$22.50.	\$4
125	<b>Great Britain.</b> #138, U, HC. CV \$40.	\$8
126	<b>Great Britain.</b> #179, U, LC/Medium cancel, VF centering. CV \$75.	\$35
127	<b>Great Britain.</b> #288, U, good cancel; 1454-1457, MNH, cpl set; 1478 (10 Pound Britannia), U, nicely cancelled high value. CV \$26.15.	\$10
128	<b>Great Britain.</b> #311, U, LC, F/VF. CV \$16.	\$7
129	<b>Great Britain-Kuwait, Tangier.</b> All MH. Kuwait #81-84; Tangier 527-530, cpl sets. CV \$10.90.	\$5
130	<b>Great Britain-Morocco Agencies.</b> #34, MNH, VF. CV \$9.25.	\$4
131	<b>Great Britain-Morocco Agencies.</b> #78-81, MNH, blks of 4; 82, 83-86, 88, MLH. CV \$11.55.	\$4
132	<b>Great Britain-Morocco Agencies.</b> #87, MH, VF. CV \$35.	\$15
133	<b>Great Britain-Morocco Agencies.</b> #93, 99-104, 105-108, MLH. CV \$16.40.	\$7
134	<b>Great Britain-Morocco Agencies.</b> #263-267, MLH, cpl set. CV \$11.50.	\$5
135	<b>Great Britain-Morocco, Tangier Agencies.</b> Morocco #89-92, MH. Tangier 514, 523, 518-520, 559-562, MH. Quality lot. CV \$20.55.	\$10
136	<b>Great Britain.</b> S/S Reproduction issued for Britain's National Stamp Exhibition, STAMPEX 1962. Stamps (reproductions) on sheet like #226, 268, 272, 334, 377. Est value \$5.	NMB
137	<b>Greece.</b> #1925, 1998, U, LC. CV \$6.40.	\$2
138	<b>Grenadines of St. Vincent.</b> 1976 American Bicentennial Official Philatelic Numismatic FDCs (w/o coins). #81-83.	NMB
139	<b>Guatemala, Hungary.</b> Guatemala #110, MNH, C633, M, NG; Hungary 3218, MNH. CV \$1.55.	NMB
140	<b>Guinea, Poland.</b> Tropical Fish, Butterflies. CTO. Guinea #570-573, 580-581; Poland 227-2231. CV \$4.85.	NMB
141	<b>Guinea, Laos.</b> Wildlife. Guinea #C92, MNH; Laos 645-647, MH. CV \$3.20.	NMB
142	<b>Haiti.</b> #448-450, C145-C147. CV \$4.70.	\$2
143	<b>Honduras.</b> #105b, red-violet error, MH; 106b, dull rose error, U. Scott says excellent counterfeits of #103-110 exist. I'm no expert – they look good to me. Value? Make an offer!	NMB
144	<b>Hong Kong.</b> #225-228, MNH, VF. CV \$68.	\$25
145	<b>Hungary.</b> MNH sets: #1000-1003, C107-C108; 1548-1554, B234; 2149-2155, B299, C325 S/S. CV \$16.25.	\$5
146	<b>Hungary.</b> MNH sets: #1447-1452, B224, C209A, 1453 S/S; 1475-1483. CV \$16.30.	\$5
147	<b>Hungary.</b> Mostly BOB: #455, U; J152**, J164*, J189, J190, J194, J198-J201, J203-J208, J213-J214, J219, J221-J223, J225, J226, J228-J235, J239-J243, U. CV \$8.30.	\$3
148	<b>Iceland.</b> U Group: #221, 224, 226, 227, 228, 237, 239, 247, 249, 251 (not incl in CV-pulled corner), 252, 728, 737, 752, 753, 760, 761. CV \$20.80.	\$5
149	<b>Iceland.</b> Newer (1979-1991), U, cpl Scott's list incl. Parks, Sports, Birds, #511//728, more than 30 stamps. CV \$36.70.	\$13

Lot #	Description	Minimum Bid
150	<b>India.</b> Mostly U Classics & Pre-War. #18, U, medium cancel, off-center; 19, U, HC "52"; 67, U, LC, F/VF; 79, M, NG, F/VF; O69, U, LC, F/VF; O104, U, medium cancel, F/VF; India-Bhopal O30, U, HC; O31, U, medium cancel/HC. CV \$50.40.	\$15
151	<b>India.</b> #1952, MNH, Indian Railways. CV \$5. Huff-puff!	\$3
152	<b>India/Jaipur.</b> #O32, U, LC. CV \$30.	\$10
153	<b>India-Pakistan-Bahawalpur.</b> India (1961-1962) #347, 351, 362, 367, 370, MNH; Pakistan (1956-1963) 175 (single & blk of 4), 163-166, MNH, + 10 U; Bahawalpur (1948-1949) 15, 17, 22-25, 26-29, MLH. CV \$19.85.	\$5.50
154	<b>Indonesia.</b> #608-615, MNH. Sports Issue. CV \$2.25.	NMB
155	<b>Iran.</b> #19. Looks U, hinged, XF. Owner guesses it's a fake. CV if real is \$600. How about filling that space?	\$5
156	<b>Iran.</b> #57, U, LC/medium cancel, F/ VF, CV \$10.	\$5
157	<b>Iran.</b> #60-65, U. (60 has pulled corner, not counted in CV). CV \$50.75.	\$20
158	<b>Iran.</b> #73, 74, 76, 78, 80, U. CV \$29.50.	\$10
159	<b>Iran.</b> #81-89, mostly U, good set. CV \$73.20.	\$25
160	<b>Iran.</b> #90, 92, 106, 107, 108, 110-111, 115-116, 145. Eleven U stamps, LC/medium cancels. (A couple are MH).	\$9
161	<b>Iran.</b> #145, 147-151. 6 stamps. (A quandry: big-value stamps, BUT, unauthorized reprints exist). My vote, in absence of certificates, is reprints. CV if real, \$495+.	\$10
162	<b>Iran.</b> #351-355, 357-360, U, LC/medium cancels. CV \$10.05.	\$5
163	<b>Iran.</b> 15 stamps, more U than M, #448, 450-462 (an extra 453). CV \$22.50.	\$10
164	<b>Iran.</b> 17 U stamps, #481//500. Two bonus stamps incl. CV \$21.95.	\$8
165	<b>Iran.</b> Approx 50 U (mostly) & M, some MNG. #560//714. CV \$14.85.	\$5
166	<b>Iran.</b> High Values: #686-687, 689-691, 694-695, M & U. (687 has tear top center, not counted in CV). CV \$83.	\$35
167	<b>Iran.</b> #771-776, U, short set; C51-C52, C54-C60, MH. CV \$6.50.	\$2.50
168	<b>Ireland.</b> U: #293, 295, 399, 472, 540, 542, 550, 555. CV \$7.65.	\$2
169	<b>Ireland.</b> Europa. #519-520, MNH. Exquisite. CV \$26.	\$10
170	<b>Ireland.</b> Fourteen stamps, U: #770, 771, 775, 776, 779, 781, 784, 789, 790, 818, 829, 848, 881, 921. CV \$18.20.	\$6
171	<b>Ireland.</b> #1130, strip of 3, MNH. CV \$4.25.	\$2
172	<b>Israel.</b> Group of MNH, ID'd on stock card: #168, 187, 188, 189, 190-202, 203-206, 207-210, 211-214, 215-217, 218-220, 221, 222-223, 224, 235-236, 237-240, C23, C24, C26, C27, C28-C30. CV \$12.	\$4
173	<b>Israel.</b> Animals in the Bible, #1593, MNH, S/S; 1637, MNH, S/S, Children of America Paint Israel, World Philatelic Exhibition. Washington 2006. CV \$12.25.	\$6
174	<b>Italy-Parma.</b> #1, U, close cut, LC. CV \$140.	\$45
175	<b>Italy.</b> #70, U, LC. CV \$10.	\$4
176	<b>Japan.</b> U Group: #172, 175, 266, 269, 275, 370, 387, 391, 392 (faulty), 1106, 1132, 1136, 1154. CV \$4.65.	NMB
177	<b>Japan.</b> (1952-1967). Defin issues, total of 40 MNH stamps (14 diff). CV \$18.45.	\$6
178	<b>Japan.</b> Olympic Issues: #821-825, 821-825a S/S (821 sheet folded), B18-B20, B24-B27, MNH. Dup. CV \$16.25.	\$5
179	<b>Japan.</b> (1980-1981). MNH: #1418, 1453, 1480, 1481-1484, B2. CV \$12.35.	\$4
180	<b>Japan.</b> (1982-1983). MNH: #1483-1489, 1493-1494 pair, 1510, 1511, 1517-1518 pair, 1548, 1550-1551. CV \$14.40.	\$4.50
181	<b>Japan.</b> (1984). MNH: #1561-1562, 1564-1565, 1566-1567, 1584, 1586, 1587, 1589-1590 pair, 1591-1592 pair, 1620, B43. CV \$18.95.	\$6
182	<b>Japan.</b> (1985-1986). MNH: #1640-1641, 1646-1647 pair, 1653, 1659, 1662, 1666-1670, 1701, 1702, 1703, 1705, 1706-1707. CV \$18.25.	\$6
183	<b>Japan.</b> (1987-1989). MNH: #1555-1556, 1737-1738, 1757-1760, 1762, 1763-1764, 1994-1995. CV \$17.50.	\$5.50



Lot #	Description	Minimum Bid
184	<b>Japan.</b> (1988). MNH: #1771-1772 pair, 1795, 1804-1805 pair, 1806, 1807, 1808-1809, 1810, 1813. CV \$13.40.	\$3.50
185	<b>Japan.</b> (1990-1991). MNH: #2022a S/S, 2066-2067, 2068a S/S, 2082-2083a S/S, 2115, 2121-2122, 2125a sheet of 2, 2123, Z110, B46. CV \$25.35.	\$8
186	<b>Kiribati.</b> Queen Mother 100 <sup>th</sup> Birthday, #555-556, MNH, cpl set. CV \$6.	\$2
187	<b>Korea.</b> U Group, 6 stamps: #102, 189, 210, 212, 236 – also, an A89 design – you get to figure that one out! CV approx \$11+.	\$4
188	<b>Korea.</b> #125a, 128, MH. CV \$4.75.	\$2
189	<b>Korea (DPR).</b> Olympics. #3412-3417, MNH, cpl set. CV \$11.	\$6
190	<b>Laos.</b> 6 M & U stamps: #41, 43, 62, 63, 65, C40. Couple of these depict elephants. CV \$4.30.	\$1
191	<b>Laos.</b> Elephants: #41-43, MNH; 804, 805, 806, 808, 810, CTO; 168-170, C52-C53, MNH. CV \$11.25.	\$5
192	<b>Laos.</b> #195a, MNH, strip of 2 + label between. CV \$3.	NMB
193	<b>Laos.</b> The Ultimate Cat Lot (+ one reptile?). All MH: #493-498, 908-913, 1231-1235. Also 649 (reptile). The Cat's Meow! CV \$29.40.	\$15
194	<b>Latvia.</b> 15 stamps, mostly U: #120, 121, 151, 155, 177, 219, 1N18, + 7 imperf stamps (one missing) prepared in 1919 but never placed in use – see note in Scott after 2N36. CV \$3.20.	NMB
195	<b>Liberia.</b> CTOs: #448, 511-514 cpl set, 525-530 cpl set, 541, 545. CV \$2.90.	NMB
196	<b>Libya.</b> Under Italian rule. #20-22, 27, 72, 83, U, LH. CV \$11.60.	\$4
197	<b>Liechtenstein.</b> Approx 26 stamps, U & MH, #18-20, 23, 25, 32-42, 199, J1-J9. CV \$6.20.	\$2
198	<b>Lithuania.</b> 12 pre-war stamps, M & U, LH: #234, 240, 247, 283, 284, 317, 318, 322, C79-C82. CV \$4.25.	NMB
199	<b>Luxembourg.</b> Approx 25 mostly U stamps: #74, 78, 82, 93-99, 101, 131-133, 141, 142, 159, 160, 168, 170, 171, others. CV approx \$5.	\$2
200	<b>Luxembourg.</b> 70 U stamps to fill spaces. Commems, defs.	\$6
201	<b>Madagascar.</b> MLH Group of 16 stamps: #79-80, 130, 147-152, 173, 269, 306-308, J8, J31. CV \$5.	\$1
202	<b>Malagasy.</b> #1182-1188, Wildlife, CTO. CV \$5.	\$1.50
203	<b>Malaya.</b> Tigers! U Group: #50, 52, 53, 56, 57, 59. CV \$8.45.	\$4
204	<b>Malaysia, Malta.</b> U. Malaysia 108-109, LC; Trengganu 93, LC; Malta 49-51, LC/medium cancels; 560-561. CV \$2.40.	NMB
205	<b>Mali.</b> #C9, C10, MNH, cpl set. CV \$9.25.	\$4
206	<b>Manchukuo.</b> 27 stamps, mostly U, a few unused: #38, 47, 62, 64, 65, 83, 87, 88, 91 (not counted in CV), 93, 94, 97, 98, 99, 100, 113, 133, 135, 136, 137, 139, 156 (pair). CV \$38.45.	\$14

#### MAIL BID SALE RULES AND INFORMATION

1. Bid increments: \$1-10 = \$0.50, \$10-30 = \$1.00, \$30-100 = \$2.00, Over \$100 = \$5.00. Bid in these increments only. Odd amounts will be lowered to the next increment. All bids are in US dollars.
2. High bidder wins at one advance over second-highest bidder.
3. If there are tie bids, the earliest postmark wins.
4. If only one bid is received, lot goes at the minimum bid listed by the owner.
5. State the highest you are willing to pay. Your high bid will be used only if necessary. No "buy" bids or requests for percentage increases will be accepted.
6. Lots are returnable for items misdescribed or misidentified. No returns on large lots or collections, etc.
7. The Mail Bid Sale Manager reserves the right to decline unreasonably low bids.
8. Lot information will be sent to successful bidders with invoice. Invoice will include postage (and insurance, where appropriate). Payment is expected in US funds within 10 days of being invoiced.
9. Lots totaling \$100 or more and shipped in one package will be insured. To request insurance on shipments totaling less than \$100, contact the Mail Bid Sale Manager.
10. Lots will be shipped and billed by the Mail Bid Sale Manager and payment should be sent to the address on the invoice. PayPal can be used: ExecutiveDirector@iswsc.org. There will be an additional 10% fee to cover the PayPal transaction. PayPal users should notify the Mail Bid Sale Manager by e-mail when payment has been made.

Lot #	Description	Minimum Bid
207	<b>Micronesia.</b> All MNH: #172, 184-185, 187-189, 195A-D (strip of 4). Three cpl sets, 10 stamps total. CV \$7.80.	\$3
208	<b>Micronesia.</b> Two MNH items: #229, S/S, 50 <sup>th</sup> Ann of United Nations; 231A-D, blk of 4, USA Navy Warships & Liberation, September 1945. CV \$7.	\$3
209	<b>Micronesia.</b> Three MNH items: #239A-D, blk of 4, Tourism; 241A-D, blk of 4, Olympics; 250A-D, blk of 4, Asian Intl Philatelic Exhibition, Tropical Fish. CV \$9.75.	\$4
210	<b>Mauritius.</b> #206, MH, F/VF. CV \$5.50.	\$3
211	<b>Netherlands.</b> U Group: #382, 433, 547, 550-552, 621, 625, 632, 659, 677, 681, 705, 706, 708. CV \$4.25.	NMB
212	<b>Dutch Indies.</b> #21, U, (Numeral 5 of 1897). '10 CV \$20. Priced according to condition.	\$2
213	<b>Netherlands, Switzerland.</b> Netherlands MNH imperf pairs #216, 218-220, cpl. (Issued during German Occupation through philatelic channels only). Switzerland 509, "Luzern" cancel; 824-827, MNH. CV \$6.15.	\$3
214	<b>New Hebrides.</b> (1967 & 1972, MNH). British: #123-126, Ann South Pacific War; 169-170, Queen's Silver Wedding Issue. French: 139-142, 188-189. CV \$10.60.	\$3.50
215	<b>New Zealand.</b> #B57, B58, M (margin hinged) mini sheet of 6 stamps; B105A, mini sheet of 6 stamps, Sea Life (margin hinged); B110A pair, MH. CV \$11.	\$3
216	<b>Norway.</b> #18, U, medium cancel, couple short perfs. CV \$14.	\$5
217	<b>Norway.</b> #541, MNH, VF. CV \$5.	\$2
218	<b>Not another one!</b> Unbelievable! Three strikes & you're out!	
219	<b>Philippines.</b> #319-325, U, cpl set, LC, LH. CV \$35.85.	\$12
220	<b>Philippines.</b> #500-502, MNH; C67, U. (502 has visible crease, not counted in CV). CV \$7.50.	\$1.50
221	<b>Philippines.</b> First Issue as a Republic, #500-502, MLH, cpl. set. CV \$2.25.	NMB
222	<b>Philippines.</b> #505, 508, MNH, XF. CV \$3.40.	NMB
223	<b>Philippines.</b> #515, MNH, S/S, Quezon type sheet of 4; 519-521, General Douglas MacArthur, MLH, cpl set. CV \$5.50.	\$2.50
224	<b>Philippines.</b> #554-556 (perf 12.5) & 554a-556a (imperf singles), MLH. CV \$4.85.	\$1.50
225	<b>Philippines.</b> Air Mail: #C52 (gum THs), C53, C55, C56, MH; C64-C66, MNH, cpl set. CV \$6.75.	\$2.50
226	<b>Philippines.</b> Air Mail: #C64-C66, U, VF. CV \$4.25.	\$1.50
227	<b>Pitcairn Island.</b> Woodcarving Art of Pitcairn, #547, MNH, strip of 4 + label. Beautiful! CV \$6.50.	\$3
228	<b>Poland.</b> Pre-war S/S, #333, MLH, (333a-d, 4 stamps). CV \$16.	\$8
229	<b>Poland.</b> #539, S/S, XF, FDC, Polish Philatelic Association Congress, Warsaw (1957). Looks like show cancel. CV \$15.	\$7
230	<b>Poland.</b> Olympic Sports (1962-1978), MNH: #1079-1086, 1159-1164, 1165, 1502-1509, 1878-1885, 2166-2171, B110, B113, B120, B132. CV \$35.95.	\$11
231	<b>Poland.</b> #1439-1447, U; 1620-1624, CTO; 1645, CTO. CV \$3.	NMB
232	<b>Poland.</b> #1628-1635, CTO, cpl set. Also, N76-N79, N81, MH (German Occupation). CV \$3.65.	\$2
233	<b>Poland.</b> Approx 38 mostly U & CTO stamps. #2744//3056, B129. CV \$15.30.	\$4
234	<b>Poland.</b> U. #2892, 2906, 2918, 2920, 2921, 2932, 2939, 2942, 2954, 2970, 2973, 2974, 2978, 2979, (2985 not in CV). CV \$4.70.	NMB
235	<b>Poland.</b> Packet of 91 large stamps, tend to recent, many CTO (1960s-1980s).	\$9
236	<b>Portugal.</b> 32 U stamps on small stock card, ID'd & CVs listed. #41//472. Best: 41, 52, 55, 58, 60C, 61, 65, 66, 67, 71A. The balance are mostly from the Ceres issue (207//262). CV \$35.85.	\$8
237	<b>Portugal.</b> S/Ss, MNH: #1341a, (Continuing Education); 1355a, (Sailing Ships). Beautiful! CV \$8.75.	\$4.50
238	<b>Portugal.</b> Europa S/S, #1391a, MNH. CV \$15.	\$7.50
239	<b>Romania.</b> #1381-1385, CTO, cpl set; 2262-2266, CTO, short set. CV \$2.	NMB
240	<b>Romania.</b> Birds. #3639-3643, 3645-3648, CTO; J65, J83, J89, J91, MNH; J118, J133, J135, RA27, CTO. CV \$6.60.	\$2
241	<b>Russia.</b> M & U & CTO: #220, 616, 616B, 734-736, also, 4008-4012 (short set). CV \$4.30.	NMB
242	<b>Russia.</b> Two cpl sets, CTO: #2516-2519, Stamps-On-Stamps! Also, 2952-2956, Cosmonauts. CV \$2.60.	NMB

Lot #	Description	Minimum Bid
243	<b>Russia.</b> #2763A, MNH, S/S. CV \$4.	\$2
244	<b>Russia.</b> BOB: #B21, B34-B36, B52, MLH; J1, J3, J6, J9. CV \$6.60.	\$2
245	<b>Russia.</b> Army of the North/Turkish Empire. Army of the North MLH: #1, 2, 4, 5, B5A; Turkish Empire #203, 204. CV \$3.40.	NMB
246	<b>Rwanda.</b> MLH: #84, 126, 202, 211-213, 219, 225, 239, 250. CV \$2.	NMB
247	<b>St Vincent.</b> S/S of 10 stamps, "Passage to Destiny", #2382a-j, MNH. Changeover of Hong Kong from British to Chinese rule. Panoramic view of Hong Kong in daytime & at night, flags of Great Britain & Peoples Republic of China, 7/1/97. Hong Kong '97 Stamp Exhibition commemoration on selva. Spectacular! CV \$7.25.	\$3
248	<b>St Thomas &amp; Prince Islands.</b> #890, MNH, S/S, Railroad. CV \$9.	\$4
249	<b>Solomon Islands.</b> (1986-1987). MNH: #569 S/S, 576-579, 597 strip of 4, 598-601, 602-605, B2. CV \$47.30.	\$15
250	<b>Solomon Islands.</b> (1987). Winner of the America's Cup, MNH S/S, #575. CV \$5.50.	\$2.50
251	<b>Switzerland.</b> #100, U, LC, F/VF. CV \$35.	\$12
252	<b>Switzerland.</b> #181-183, U, good cancels. CV \$10.90.	\$4
253	<b>Switzerland.</b> #J28, near perfect cancel "Winterthur Fahrpost". (Possibility that it might be J28a, CV \$60.) CV \$160.	\$40
254	<b>Switzerland.</b> #J60-J67, MLH, cpl set. CV \$19.	\$8
255	<b>Togo, Tuvalu.</b> Togo #1252, 1300; Tuvalu 57. MNH. CV \$2.80.	NMB
256	<b>Trinidad &amp; Tobago.</b> 1960 Summer Olympics, Moscow. MNH: #329-331, 332 S/S. CV \$3.45.	\$1.50
257	<b>Tristan da Cunha.</b> #568-571, MNH, cpl set. CV \$14.90.	\$6
258	<b>Turkey.</b> Mostly U Group. #95, 97, 144, 237, 247, 258, 260, 421, 424, 429, 634, 636, 639, 642, 679, 680, 691; also BOB: C14, J97, O30, O54, O57, RA71, RA122, RA164, RA207. I may have missed a couple. We don't see a lot of Turkey here. CV \$30.60.	\$10
259	<b>Tuvalu.</b> MNH blk of 4, #58. CV \$5.60.	NMB
260	<b>Upper Senegal, Niger.</b> #1, 4, 5, 18, 23 (18 & 23 poor gum). CV \$8.10.	\$2
261	<b>Uruguay, Upper Silesia.</b> How's that for an unusual pairing? Uruguay #600*; 606*, 637-638; U714*; Upper Silesia 19*, 20, U. CV \$3.55.	\$1
262	<b>Vatican City.</b> #1-13, E1, E2, MH. CV \$53.35.	\$20
263	<b>Vatican City.</b> Club Owned. #239-242, MNH, cpl set. CV \$4.	NMB
264	<b>Vatican City.</b> About 17 MLH stamps: #19, 20, 22-27, couple of THs, some medium hinged to HH, #439-444, 461-463. Fill some spaces at a low cost.	NMB
265	<b>Vatican City.</b> MNH, cpl set, #733-736, Pontifical Academy of Sciences. '11 CV \$4.	\$2
266	<b>Vatican City.</b> #749-751, MNH, cpl set. '11 CV \$5.	\$2.50
267	<b>Vatican City.</b> #752-754, MNH, cpl set. Colorful Saints issue. '11 CV \$5.25.	\$2.50
268	<b>Vatican City.</b> #755-757, MNH, cpl set. St Thomas Moore issue. '11 CV \$5.	\$2.50
269	<b>Vatican City.</b> #793-794, MNH cpl set. Philatelic & Numismatic Museum. '11 CV \$6.10.	\$3
270	<b>Vatican City.</b> #795-802, MNH, cpl set of 8 stamps, Journeys of John Paul II. CV \$24.45.	\$12
271	<b>Venezuela.</b> 6 U stamps: #125, 151 (space fillers); 917; 3 airs: C82, C85, C89.	NMB
272	<b>Vietnam (South).</b> #2, 4, 6, 8, 11, 27, 30, 31, 443, C3, U: C9, MNH. CV \$10.85.	\$5
273	<b>Vietnam (South).</b> Eight U stamps, LH: #6, 239, 242, J1-J4 & more I can't find in Scott.	NMB
274	<b>Vietnam (North).</b> #1083, 1437, U, LC. CV \$3.80.	\$1
275	<b>Vietnam (North).</b> Chess: #1293-1294, 1732-1736, 2296-2300; Elephants. All CTO. Colorful. CV \$11.	\$3
276	<b>Yemen (YAR).</b> Club Owned. MNH: #6622-6639 & same imperf. Builders of World Peace. CV \$7.	NMB
277	<b>Yemen.</b> First Airmails! #C1-C2, U, LC, F/VF. CV \$4.50.	\$2
278	<b>Yugoslavia.</b> (1960-1982). MNH, U, 2 sets, 2 FDCs. #798-802, 918//923, 1166-1173a (2), 1572-1573, 1574 S/S (U), 1664-1671, 1672. Also FDC 795-802, C4. CV \$34.70.	\$11
279	<b>Yugoslavia.</b> #RA5, RA8, RA9, RA11, MH. Issues for Istria & Sloven Coast (Zone B): #28, 40, 42, 43, MH. CV \$4.10.	\$2
280	<b>Worldwide.</b> "C" Countries. Chile #422, 442-446, C293, MNH; Peoples Republic of China 246, U; Congo 1055-1057, Prehistoric Animals. CV \$6.40.	\$2

Lot #	Description	Minimum Bid
281	<b>Worldwide.</b> Costa Rica, Czechoslovakia, Eastern Silesia, Ethiopia. Who thinks these things up? Odd-ball special: Costa Rica #332 (x2), U; Czechoslovakia P2, P2A, P7, U; Eastern Silesia 2, 23, E2, M & U; Ethiopia 488, MNH. CV \$4.80.	NMB
282	<b>What?</b> Again?	
283	<b>Kenya, Uganda, Tanzania.</b> 22 U stamps: #20, 22, 24, 43, 46, 49, 60, 66, 68, 69-72, 74, 76, 79, 80, 90, 92, 104, 105, 108. CV \$9.30.	\$3
284	<b>Worldwide.</b> "S-T" Countries. Spain #C116, U, LC; Sri Lanka 786-789, MNH; Tanzania 792-794, 796, 797, CTO Elephants. CV \$9.65.	\$3
285	<b>Worldwide.</b> All SON w/legible cities/towns. Several countries: Australia #1580; Austria #962-965 (dup); Belgium 1668; Denmark 1053, 1064; Finland 681, 692, 695 (x3), 702, 970, 1038; Germany 1872, 1950; Great Britain 1758; Jersey 818; Italy 1362, 1570, 1608, 2207; Netherlands 574-575, 599, 608 (x2), 611 (x2), 615 (x2), 616, 621 647, 655; Switzerland 965. CV \$14.85.	\$5
286	<b>Worldwide.</b> Higher Value Group: 150 stamps, ID'd on sheets of 25 (Malta, Japan, Australia, Mexico, Great Britain, Germany), mostly U, Mexico mostly MNH. '09 CV \$80.70.	\$10
287	<b>Worldwide.</b> Higher Value Group: 72 stamps, mostly U, ID'd on sheets of 12 (Germany, Great Britain, Australia, Hungary, Ireland, Jamaica). All valued ('09 Scott) at 50¢ or higher. CV \$82.50.	\$10
288	<b>Worldwide.</b> HBO. 100+ M & U better singles, sets & small S/Ss w/values from \$1-\$24. Most stamps are from Brazil & incl #2164 (CV \$15), 2556 (\$11), 2631-2636 (\$24); Venezuela C232, C234, C236; some French Africa, others. CV \$370.	\$40
289	<b>Worldwide.</b> Little Pacific Group. Kiribati #J8, MNH; Nauru 160, MNH; New Zealand, B36, B37, MNH; E2, MH; Papua 118-121, MH. CV \$5.35.	NMB
290	<b>Worldwide.</b> Club Owned. South America, Mexico. MNH Singles Group. Argentina 12 stamps (2 are CTO), #75//1023; Chile (7), 426//459, C272; Venezuela (14 diff, 6 dup), 1041//1205, C942; Mexico 1147-1152, 5 airs, C525//C531. List of Scott #s incl. CV \$19.85. ¡No te pierdas esto!	NMB
291	<b>Worldwide.</b> Dinosaurs. 100 pre-historic beasts, real or imaginary, lots of countries, lots of color, lots of fun!	\$7
292	<b>Worldwide.</b> Topical Packet. 100 Horses, lots of diff countries – I see Equus africanus has sneaked in there too! A fun topical lot!	\$5
293	<b>Worldwide.</b> Club Owned. Cigar Box (8.5" x 6.25" x 1.5" outside dimensions). What the.....? Where do these things come from? Cigar box absolutely stuffed with... a lot of stuff: loose singles, S/Ss, sets in glassines & 102 cards, postcards, covers, man-oh-man! Some M, some U – some box!! I see Spain, Jamaica, Japan, Greenland, Bulgaria, Germany, Palestine, Saar, Malaya, etc. Almost no end to this lot. If you like to dig in, sort & catalog 'till the cows come home, this is for you! This lot has many good stamps. Total weight is approx 1.75 lbs. Happiness guaranteed. Nice cigar box, too.	\$20
294	<b>Worldwide.</b> A to Z Packet. Now I've seen everything! One stamp for each letter of the alphabet. Australia #805 to Zaire 904 – but what happened to "X"?! R U Curious?	\$2

Bargain Bin. The following lots appeared in earlier sales and did not bring any bids. They appear again here with substantial discounts in the minimum bids or even no minimum bid. Carefully peruse these bargain lots for some large savings or even outright steals.

BB295	<b>USA.</b> Classics. Some of these U veterans have seen better days but here's a deal on some key issues. Flaws incl: #11A, close cut; 147; 185, slight TH; 209, slight TH; 216, TH; 226, small tear; 260 repaired tear, rough perfs; 294, slight TH, pulled corner. '11 CV \$225. Was \$20 in MBS #48. Slashed to:	\$10
BB296	<b>Canal Zone.</b> Donated to Club. #385, U, some rough perfs. CV \$3.25. Last time!	NMB
BB297	<b>Armenia.</b> #330, MNH. CV \$60. Bonus: 354, MNH. Was \$30 in MBS #48. Now, reduced by half!	\$15
BB298	<b>Armenia.</b> #332, MNH. Was \$30 in MBS #48. Now slashed 50%. '11 CV \$60.	\$15



Lot #	Description	Minimum Bid
BB299	<b>Cambodia.</b> Three MLH cpl sets: #138-140, 160-162, 165-168. '11 CV \$6.55. Was \$3 earlier, now reduced!	\$1.50
BB300	<b>China.</b> #974-979, Unused, VF. CV \$13.30. Was \$7 in MBS #48.	\$3.50
BB301	<b>China (PRC).</b> #59, Unused, VF. CV \$17.50. Was \$8 earlier.	\$4
BB302	<b>China (PRC).</b> #135, Unused, XF. CV \$9.50. Was \$5 earlier. Wow!	\$2.50
BB303	<b>Cook Islands.</b> 1976 National Wildlife Conservation Day. #464, sheet of 5 + label. CV \$15. Was \$5 previously. Reduced 50%.	\$2.50
BB304	<b>Denmark.</b> #309, MNH, F/VF. CV \$13. Was \$7, now reduced.	\$3.50
BB305	<b>Denmark.</b> Two very fine appearing sets, BUT removed from album w/adhesions & THs, HR. #371-373, 374-375. CV \$1.90.	NMB
BB306	<b>Denmark.</b> Little Group, all M, some H, LH & HR or THs. #382, 383, 385, 386, 388-393. '11 CV \$8.50. Reduced!	NMB
BB307	<b>Germany.</b> 50 diff pre-war stamps, #29//501. Minimum CV 55¢ w/40 at \$1 or more. Highlights: #29, 57, 79, 362. (49 stamps are U.) CV \$97.60. Was \$30 earlier.	\$15
BB308	<b>Germany.</b> #771-772, MLH; B138-B139, MNH; B209-B211, MNH; B212-B214, MLH. CV \$22.75. Was \$9 earlier.	\$4.50
BB309	<b>Greece.</b> Donated to Club. #412, M, HR; 455-458, MLH; 459-463, MH, short set, one U. CV \$7.40.	NMB
BB310	<b>Guinea.</b> 1969. First Man on Moon cpl set, CTO, singles (in French), #541b-547b. Crease in 543b. Last call!	NMB
BB311	<b>Iran.</b> Donated to Club. #Q19-Q35, MNH, cpl set. CV \$16. Was \$8 in MBS #48. Reduced 100%!	NMB
BB312	<b>Ireland.</b> Donated to Club. #936-938, U, cpl set. '11 CV \$6.75. Was \$2 in MBS #48. Now reduced!	NMB
BB313	<b>Japan.</b> Donated to Club. #86, U, LC, perfs clipped on top & right side. 25 <sup>th</sup> Ann Emperor Meiji & Empress Haru (1894). CV \$11. Fill that space!	NMB
BB314	<b>Japan.</b> Donated to Club. Sea Life. #860-871, cpl set, MLH. CV \$3.35. Totally reduced!	NMB
BB315	<b>Liberia.</b> Birds, Sports, President Tubman: #341-345, MH; 347-349, C88-C90, MNH; 362-363, C107-C110, MNH; 390-392, C126, MNH. CV \$13.85. Was \$6 previously. Reduced 50%!	\$3
BB316	<b>Mexico.</b> Donated to Club. #891-896, MLH, F/VF; 1037, 1039, 1040, 1041, 1042, MNH. CV \$6.25. Was \$2.50 earlier.	NMB
BB317	<b>Mexico.</b> Donated to Club. Olympics, MLH: #975, C318-C320, short set. CV \$4.45. Total Reduction!	NMB
BB318	<b>Montenegro.</b> Donated to Club. #2N33-2N37, MLH, short set. CV \$5. Was \$2.50 in MBS #48. Now!	NMB
BB319	<b>Norway.</b> Donated to Club. #181-182, MH. Was \$2 in MBS #48. CV \$4.75. Bargain basement price!	NMB
BB320	<b>Pakistan.</b> Donated to Club. #45, 46, U, LC/medium cancels, F/VF. CV \$10.25. Was \$4 in MBS #48. Wow!	NMB
BB321	<b>Portugal.</b> Donated to Club. #671-674, MLH, cpl set. CV \$9.10. Was \$4 earlier.	NMB
BB322	<b>Portugal.</b> Donated to Club. #1035-1037, MLH, cpl set. Was \$3 in MBS #48. Total Reduction!	NMB
BB323	<b>Portugal.</b> Donated to Club. #1038-1040, MLH, cpl set, gum disturbance. CV \$17.85. Was \$6 earlier. Now only!	NMB
BB324	<b>Romania.</b> Olympics. #1452-1457, M, some HR; 1597-1609, MH. Was \$4 in MBS #48. CV \$8.80. Reduced to:	\$2
BB325	<b>Sharjah.</b> Space Travel Topicals/Cinderellas. A fun lot of 16 stamps & S/S (President Nixon, Apollo 11). Est value \$8. Was \$4 in MBS #48. 50% reduction!	\$2
BB326	<b>Worldwide, "R" Countries.</b> Donated to Club. Reunion #343-344, MNH; Romania 1845, C153, CTO; Russia 2280, MNH. CV \$5.20. Now!	NMB
BB327	<b>Somali Coast.</b> #271-272, MNH; 291, MH; B13, MH; C7A-C7B, MNH & MLH respectively. '11 CV \$17.65. Was \$8 in MBS #48. Here we go!	\$4
BB328	<b>Somalia.</b> #388-392, MH, cpl set. CV \$4.65. Was \$2. 100% off!	NMB
BB329	<b>Straits Settlements.</b> Donated to Club. #215, U, nice circular Singapore cancel. '11 CV \$4.25. Was \$2 in MBS #48. Today only!	NMB
BB330	<b>Sweden, Switzerland.</b> Sweden #53, 60, 94, 100, 1922, 1986, 2083, O15; Switzerland 72. All U. CV \$7.15. Was \$2. Now!	NMB

Lot #	Description	Minimum Bid
BB331	<b>Sweden.</b> #487-489, MH, cpl set; 620-621, MLH. CV \$7.60. Was \$3.50. Reduced!	\$1.50
BB332	<b>Switzerland.</b> #67, Unused, NG, granite paper. CV \$18. Was \$8 in MBS #48. Reduced!	\$4
BB333	<b>Switzerland.</b> #200-202, U. LC/medium cancels, F/VF. CV \$14.50. Was \$7. Reduced!	\$3.50
BB334	<b>Thailand.</b> Club Owned. #458, U, VF; 753-756, MH, cpl set. CV \$12. Was \$5 in MBS #48. Slashed 100%!	NMB
BB335	<b>Togo.</b> Donated to Club. #270-275, MH; 276-285, MLH. CV \$5.35. Was \$2 in MBS #48. Total reduction!	NMB
BB336	<b>Tunisia.</b> #C15, C16, MLH, F/VF. CV \$14.25. Was \$7. Now!	\$3.50
BB337	<b>Vietnam (South).</b> #19, MNH; 73-78, MLH; 88-99, MLH; 166-169, MLH, cpl sets. '11 CV \$19.05. Was \$8 in MBS #48.	\$4
BB338	<b>Vietnam (South).</b> #108-111, MLH, cpl set; 128-131, MLH, cpl set; 174-177, MLH, cpl set; 311-313, MNH, short set. CV \$34.05. Was \$11 in MBS #48. Goodbye to this one!	\$5.50

## END OF MAIL BID SALE

## ISWSC MAIL BID SALE #51 BID SHEET ~ Closing January 31, 2013

MEMBER #:

NAME:

ADDRESS:

PHONE:

E-MAIL:

LOT #	BID	LOT #	BID	LOT #	BID	LOT #	BID	LOT #	BID

Mail to: ISWSC MBS #51; c/o Mike Crump; PO Box 580; Whittier, CA 90608-0580 or e-mail to: desoto1947@yahoo.com

## Ventures in Printing

Continued from page 9

typeface seem joined in a charming combination; color is carefully coordinated throughout the entire coat of arms series; and the typeface, while obviously early 20<sup>th</sup> Century, seems to make reference to medieval script, as is appropriate, given the medieval origins of the shield designs. (The author has been unable to identify the

typeface found on the coat of arms stamps. Is it, generally, *arts and crafts* in style?)

And then again, thematic and graphic integration are not the same as *aesthetic appeal*. The Persepolis Palace stamps of Iran (Iran Scott 574-7, 1915), recently declared by this writer to be his personal choice as among the most beautiful stamps of the classic era, are certainly a case in point (*The Circuit*, July/August, 2012).

Continued on page 24

# How Many Stamps?

Continued from page 10

depending upon the catalog used and how minor varieties are counted. Stile's count, the highest of the bunch, includes every major and minor variety listed in Scott.

But what about from 1840 to the present? This presents a more difficult challenge, if for no other reason than the sheer number of new issues, some of which are of questionable validity.

There are some recent published counts for individual years. Michel, in its journal *Michel Rundschau*, has published a survey in German examining the cost of collecting new issues since the 1980's. *Linn's* had been reporting the Michel stats, but in more recent years the Scott catalog staff is performing their own calculations. These summaries are running about three years behind because of the time consuming nature of gathering the data. Still, the articles make interesting reading with tidbits such as the Scott catalog value of every stamp issued in 2009 was \$2,025.

As for grand counts, I know of three. Michael Weatherford estimated 600,000 or so stamps from 1840 to the end of the last century if you count minor varieties and those of questionable validity. (He also guesstimated as many as 300,000 local posts, perhaps more than 500,000 revenues, and many hundreds of thousands that would fall under the rubric of postal stationery.)

The publisher Michel doesn't provide any detail, but reported this year that it recently assigned its 669,000<sup>th</sup> number. Michel estimates that the company adds around 18,000 new issues each year to its catalogs.

The most detailed estimates are maintained by the Scandinavian collector Keijo Kortelainen. His latest total is 620,761 stamps from 1840 through 2010. Keijo uses the Michel catalog and publishes breakdowns of these numbers on his "Stamp Collecting" blog. (Which, if you are not familiar with it, is a wonderful resource for worldwide collectors.) Keijo calculates that for the period 1941-2000, 412,784 different stamps were issued by 790 political entities. This total includes local issues. And for the period 2001-2010, the figure is 127,108 different stamps by 286 entities. Keijo indicates that he will make the database underlying these counts available at some point, including breakdowns by stamp type.

And in case you think this question could be of no practical interest, Harmer-Schau Auctions is currently offering by private treaty a worldwide collection that it says is 99% complete for 1840-2010. So just how many

stamps is that? The auction house doesn't provide a count, but based on the above we can assume it should weigh-in, not at billions and billions, but at around 600,000 stamps.

## References

- Frankevicz, Martin J. "Cost of collecting new issues country by country in 2010," *Linn's Stamp News*, December 19, 2011, p. 50. At one time, articles back to 2002 were available online at <http://www.linns.com/wwwyearlycost>, but they are currently inaccessible. The charts for 2007-2009 can be found in Frankevicz's column titled "Stable U.S. dollar and weak economy impact cost of collecting new issues," *Scott's Stamp Monthly*, October 1, 2012, pp 10-15.
- Kortelainen, Keijo. "Is a complete all-era worldwide stamp collection possible?" <http://www.stampcollectingblog.com/worldwide-stamp-collection.php>.
- Kortelainen, Keijo. "A new, more detailed look into number of different worldwide stamps issued." <http://www.stampcollectingblog.com/number-of-different-stamps-issued.php>.
- Skinner, Bob. "How Many Stamps Were Issued Between 1840 and 1940? Part 1-4." Continued by "More on Just How Many Stamps Are There?" <http://globalstamps.blogspot.com/>
- "Stamps to stick," *The Youth's Companion*, v. 26 (June 28, 1923), p390.
- Stiles, Kenneth B. "A Century in Review," *Scott's Monthly Stamp Journal*, v. 22-23, January 1941, pp 118-119.
- Stiles, Kenneth B. "Of Topical Interest." *Scott's Monthly Journal*. An annual topic was stamp counts for the previous year. Stiles' counts appeared from the 1920's to the early 1940's.
- Stiles, Kenneth B. "Table Showing, by Ten-Year Periods, the Number of Recognized Major and Minor Varieties of Postage Stamps Issued During Philately First Ninety Years," *Scott's Monthly Stamp Journal*, v. 11-12, May 1930, page 75.
- Vaanass, K. *Filatelien taito* (Helsinki, 1969, 2nd edition).
- Weatherford, Michael A. "How many stamps are there?" Jun 2, 2000. Offline but accessible via the Internet Wayback Machine website: [http://web.archive.org/web/20071121121503/http://www.suite101.com/article.cfm/stamp\\_collecting/40891](http://web.archive.org/web/20071121121503/http://www.suite101.com/article.cfm/stamp_collecting/40891).
- "Worldwide thru 1952: How many stamps do I need?????" Thread with a variety of stamp counts on the Stamp Community Bulletin Board, [http://www.stampcommunity.org/topic.asp?TOPIC\\_ID=19704](http://www.stampcommunity.org/topic.asp?TOPIC_ID=19704).

# Ventures in Printing

Continued from page 22

The thematic scheme is an ancient palace in the center opposite a delicate golden border embedded with flowers. The graphic style is a black Victorienesque engraving surrounded by a 15<sup>th</sup> Century Islamic border decoration. Hardly integrated. Yet some readers might agree that the Iranian stamps are quite lovely. What shall be said, then, about the aesthetic appeal of this highly theme- and graphics-integrated Swiss Pro Juventute coat of arms series? That is left to the reader.

Both Germany (Scott B12-18, B23-32; 1925-29) and Belgium (Scott B264-272; 1940-41) copied Switzerland's tradition of issuing multicolored charity stamps featuring a coat of arms—a *state* coat of arms in the case of Germany and a *province* coat of arms in the case of Belgium (Figure 4). Belgium also followed Switzerland in placing unique borders around each coat of arms, with border design elements referring specifically to that province, while the German design places a rather diminutive state coat of arms under the German eagle, and all of this within an oval that is devoid of any other symbols representing the individual state. This is an interesting comparison in thematic integration. Also: What is the underlying iconographic meaning of the two different patterns, *i.e.* Swiss/Belgian vs. German? That question, as well as any questions about the comparative *aesthetic appeal* of the three sets, are left to the reader. There is another question that is bothering the writer.

## Why So Popular?

Why, after all, *were* the stamps so popular with collectors of the mid-20<sup>th</sup> Century? The preceding discussion suggests several contributing, but arguably minor, factors: Yes, *all* Pro Juventute stamps had a reputation of *charity legitimacy* that was often lacking for other semi-postal stamps. Programs of aid to children—backed broadly by private social service agencies, government agencies, and population-at-large—gave the stamps an aura of respectability, even

for collectors throughout the world. Yes, the lore of heraldry, with its ties to medieval history, was attractive to some collectors, but frankly probably not to a large number. Yes, the design of the coat of arms stamps is far above average in integration, both thematically and graphically. And yes, not even mentioned yet, the coat of arms stamps, along with all of the other Pro Juventute stamps, are a bonanza of excellent material for *topical* collectors. But there is another factor—admittedly somewhat hypothetical—besides which all others pale.

Pro Juventute coat of arms stamps, especially those that are multicolored, were a “big hit” with mid-20<sup>th</sup> Century collectors *because the color designs are a celebration of highly saturated and contrasting hues!* They are a riot of brightly opposing colors printed on straw- or cream-colored paper. (Was off-white paper chosen in order to moderate the effect of high saturation and contrast?) And as such, they were essentially a philatelic “new thing” when first issued in 1918.

If this explanation sounds far-fetched, then consider the quality of multicolor that stamps had exhibited *prior* to the coat of arms stamps—as discussed in numerous past articles in this series: Think of the pre-WWI *engraved* (recess-printed) multicolored stamps of Iran (Scott 54-5, 59), Chile (Scott 78), Barbados (Scott 109) and Austria (Scott 127, 144)—all subdued in color combination, with exception of the silly red marginal border on the Austrian-printed Iranian stamps. (Someone might claim that the Barbados “Olive Blossom” is a bit flashy; but it is, after all, only a near-analogous combination of green, blue and black, admittedly with high-saturation colors.)



Figure 3—Canton of Valais (detail), Switzerland, 1921 (Scott B18)



Figure 4—Canton of Thurgau, Pro Juventute, Switzerland, 1926 (Scott B37); State of Anhalt, Emergency Aid, Germany, 1928 (Scott B27); Province of Antwerp, Winter Help, Belgium, 1941 (Scott B271).

Think of the numerous pre-WWI typographed (relief-printed) multicolored stamps. (Well, yes, for a moment at least, skip the *Dove of Basel* [Switzerland, Scott 3L1], the Heligoland multicolored coat of arms and decorated-numeral stamps [Scott 20-25], and the



Bosnia-Herzegovina postage dues [Scott J1-13]). Instead, think of the near-bicolor subtleties of the Zarins designed Russian Imperial Eagles (Scott 45, 68, 71-2, 108-9, 131/3/5) and Russo-Japanese War charity stamps (Scott B1-4)... and the near-pastel shades of the Korean Yin Yang (Scott 32, 53)... and the fine Bradbury-Wilkinson interweaving of multicolor into a softly ornate tapestry in the Romanian *Angel of Charity* stamps (Scott B13-16)... and the autumnal vermilion and gold design, or the bister-centered silver- and gold-framed design, or the delicate Persepolis-inspired designs, all on the Enchedé-printed stamps of Iran (Scott 445, 455, 457-63, 569, 571-7). And granted that there are, indeed, bold contrasts of color in the Swiss *Dove of Basel* and Heligoland stamps, these issues have been very scarce (*Dove*) or relatively scarce (Heligoland, unless they are reprints) among collectors. Yes, the Bosnian postage dues are a commonly available and intensely colorful exception; but they are, well, *postage dues*.

The point being that, while in many cases these earlier multicolored stamps are indeed more beautiful than the Swiss coat of arms stamps, their beauty is partly due to designers' avoidance of color intensity and contrast. (Observe, for example, the reduced intensity of "red" and "green"—actual ink colors identified by the Scott catalogue—on the 1905 Zarins-designed Russia, Scott B1, Admiral Kornilov Monument. This reduced intensity is made possible by relief-printing of lines and dots, rather than solids. Compare this with the solidly-printed red and green of the 1923 Switzerland, Scott B27, Canton Neuchâtel coat of arms. This level of intensity was preferred, of course, in keeping with the popular concept of a coat of arms.) Thus, the first *sustained* blast of multicolor excitement on postage stamps, made possible by a skillful *typography* of intensely contrasting hues, was sounded in 1918 with inauguration of the *inexpensive* Swiss Pro Juventute coat of arms series. And collectors loved it!


Stamp popularity created by new bursts of multicolor? Hypothetical indeed! But hear again the words of philatelic commentators who were contemporary with issuance of the Pro Juventute coat of arms stamps: "beautiful heraldic designs" (Melville); "charming", "highly decorative" (*The American Philatelist*); "attractive and colorful", "gorgeous" (*Linn's Weekly Stamp News*).

### References

- The American Philatelist* (January, 1925), p. 234.  
*The American Philatelist* (January, 1926), p. 254.  
 "Anti-Tsiganism", Federal Commission against Racism (Switzerland), [www.ekr.admin.ch](http://www.ekr.admin.ch).  
 Bork, William (April, 1927). "History on Swiss Stamps", *Scott's Monthly Journal*, pp. 62-64.

- Kehr, Ernest A. (1947). *The Romance of Stamp Collecting*. New York: Thomas Y. Crowell Company.  
*Linn's Weekly Stamp News* (December 30, 1930), p. 119.  
 Lowe, Robson (1943). *Masterpieces of Engraving on Postage Stamps: 1840-1940*. London: Postal History Society.  
 Melville, Fred J. (Jan 20, 1923). "The Yule-Tide Stamps of Youth", *Mekeel's Weekly Stamp News*, pp. 41-42.  
 Mulford, Montgomery (June 17, 1929). "The Tale of Cities", *Linn's Weekly Stamp News*, p. 350.  
*Philately of Switzerland: An Introductory Handbook* (2010). Richard T. Hall, editor. Asheville, NC, American Helvetia Philatelic Society.  
 Rawnsley, E. J. (Jan/Feb/Mar/Apr, 1978). "The Pro Juventute Arms Stamps", *Tell* (Journal of the American Helvetia Philatelic Society).  
*Scott 2010 Standard Postage Stamp Catalogue*, Vols. 5 & 6.  
*Scott's Monthly Journal* (August, 1928). (John Luff, editorial remarks), p. 179.  
 Stover, Sandy (Mar/Apr, 2011). "Multicolor and Philanthropic Stamps", *The Circuit*, pp. 4-7, 20-23.  
 Stover, Sandy (July/Aug, 2012). "Multicolored Iranian Stamps of the Late Qajar Period – Part 3", *The Circuit*, pp. 6-15.  
 "Swiss Pro Juventute Stamps Raise Funds for Children and Families", [www.thestampcollector.net](http://www.thestampcollector.net).  
 Zinsmeister, Marion Carne (Vol. 12, Nos. 1-11, 1949). "The Pro Juventute Stamps of Switzerland", *The Helvetia Bulletin*.

### ISWSC To Meet At AmeriStamp Expo

 Members John Baumert (#1246) and Gene Stutzenstein (#2716) will host an ISWSC meeting at noon on Saturday, January 19 at AmeriStamp Expo in Louisville, Kentucky. Come meet them and others with a passion for worldwide collecting!

WORLDWIDE USED STAMPS in packet approvals 12¢ per stamp. France, Germany, Italy, Portugal stamps offered and more. Joe Farrugia (#690D); 102 Biancaville Triq Tilippu Farrugia; Zurrieq ZRQ 2263—MALTA. [farj@maltanet.net](mailto:farj@maltanet.net) [07-08/13]

CANADA MINT #'s 620, 620i, 620ii, 621, 621i, 621ii only \$5.00 set. Pink Panther #1107i mint \$5.00 single. Harold Towlson (#2609D); 60 Ivanhoe Rd; Buffalo, NY 14215-3610—USA. [09-10/12]

200 WORLDWIDE OR US STAMPS \$2.00 or 100 Large Russia \$2.00 or 150 Australia, New Zealand, Papua New Guinea mixed commemoratives \$3.00. 200 Canada \$4.00. Include 88¢ SASE for each order. Send to Harold Towlson (#2609D); 60 Ivanhoe Rd; Buffalo, NY 14215-3610—USA. [09-10/12]

# Whatzit

Continued from page 5

The 80q flower stamp listed as Whatzit 30.4.2 is Albania Scott #1033.

Whatzit 30.4.3 is a fiscal stamp issued by the Provincial Council of Alava, a province in Spain Basque region. This same stamp can be found at:

[www.ebay.es/sch/sis/htmlL\\_nkw=825+FISCAL+DIPUTACION+FORAL+DE+ALAVA+PESETAS+REVENUE](http://www.ebay.es/sch/sis/htmlL_nkw=825+FISCAL+DIPUTACION+FORAL+DE+ALAVA+PESETAS+REVENUE).

We have some information on Whatzit 30.4.4. The inscription at the top of this stamp is *Schweiz Bundesbahnen* (Bundesbahnen refers to the Federal Railway [Federal German Republic, Austria and Switzerland]). The right script is *Strade ferr* and the left script reads *Chem de fer federaux*. A member has 7 of these stamps. All have rectangular cancellations with rounded corners reminiscent of Belgium railway cancellations. One of these cancellations



Whatzit 30.5.3



Whatzit 30.5.4

includes a "ü" (u with an umlaut) which excludes Belgium. The suggestion is that this is a Swiss revenue issue, probably railway related. The latest information I received on this Whatzit is that it is a Swiss Federal Railways (SBB) stamp. He speculates that these stamps were used for parcel post fees or baggage. The value is 10 Centimes (French) or Rappen (German). The blanked out portion of the stamp is indeed the French version of SBB with the German on top and the Italian on the side, covering the three official languages of Switzerland.

The first Whatzit (30.5.1) for this issue of *The Circuit* is a German 2pf red/orange local stamp.

The next is Whatzit 30.5.2, a Belgium 10c red fascicle stamp.

Whatzit 30.5.3 is a photocopy so I do not know the color. I guess that this is a Slovenia revenue.

The last two Whatzits are, I believe, Russian revenues. Whatzit 30.5.4 is a 20k red/brown stamp. The top 2/3 of the stamp is centered with an imperial crown. The bottom third is empty with a multicolored mottled red & green background.

Finally, Whatzit 30.5.5 is a 5k blue revenue with a

rectangular box overlooked by a crown. Within the box is a feline (under a cloud?) above a bowl(?) of fruit.

For all of these Whatzit stamps, we need to confirm the country of origin, usage, set size, date of use and anything else of interest.

My thanks to everyone who took the time to answer the Whatzits or to send in Whatzits for us to discuss.



Whatzit 30.5.5

\*\*\*\*\*

Richard T. Barnes

11715 123rd St NW

Edmonton, AB T5M 0G8 CANADA

rtbarnes@shaw.ca

## Youth Stamp Club Moderator Wanted

by Richard Rizzo (#2215)  
Director of Stamp Outreach

For the past several years, our Stamp Outreach Program has been supporting the Youth Stamp Club at the San Marcos Boys & Girls Club. The club was run by Karl Deibel who unfortunately passed away this past February. The Boys & Girls Club is willing to continue the program, but has been unable to find a new moderator.

If you (or someone you know) lives in the San Marcos, California area and might be interested in volunteering in this capacity, please contact:

Carmen Laguardia

The Boys & Girls Club of San Marcos

1 Positive Place

San Marcos, CA 92069

Phone: (760) 471-2490

E-mail: claguardia@webcc.net

The only requirements of this volunteer would be to help young boys and girls learn the fundamentals of stamp collecting. Our organization will assist by providing stamps and other philatelic materials.

Please consider being a volunteer so that we can pass on our fun and educational hobby of stamp collecting to the next generation.

Submit an article for publication! Contact the Editor.

# President's Report

by John Seidl (#1646)

I would like to start the column by welcoming our newest members! I've been pleased to see several new members due to our recent recruiting efforts and can only urge each of you to invite your philatelic friends to join us. The brochure and application are available on the ISWSC web site, [www.iswsc.org](http://www.iswsc.org). Please print some out and bring them to your next local stamp club meeting.

The ISWSC is now on Facebook! Check us out at <http://www.facebook.com/ISWSC> and be sure to "like" the page to help spread the word. Not many philatelists are on Facebook, but there are a few – the younger ones in particular. If you belong to Facebook, be sure and post a photo of your favorite stamp to our page.

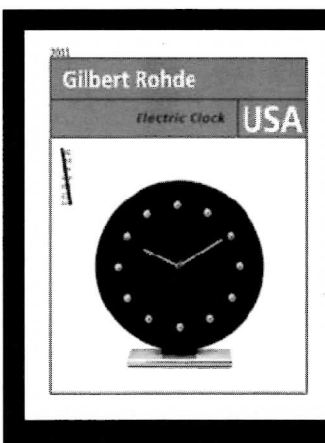
I got some great stamps in a Swap Circuit this week – 29 in fact. Have you signed up for a circuit yet? These are "one for one" exchanges with no attention paid to catalogue value. An assortment of 100 worldwide stamps is sent to the first person on the list. That person takes out the stamps he/she needs and replaces them with first quality stamps of their own to bring the quantity back to 100 prior to forwarding the packet to the next person on the list. The annual fee for participation is 100 stamps plus \$2. To sign up, contact Randy Smith at [rasmay4@frontiernet.net](mailto:rasmay4@frontiernet.net) or P.O. Box

2085; Minneapolis, MN 55402.

October is National Stamp Collecting Month. Our friends at the APS said it well when they wrote that stamp collecting is not the same hobby that it was in the prior centuries. The focus has moved beyond just trying to fill that stamp album to be limited only by one's imagination. I have a great topical collection of stamps and covers featuring clocks and watches that reflects the two dozen antique clocks I have in my home. Stamps can be an integral part of what interests us in life—travels, geography, sports, history and even the

enrichment of our other hobbies.

I speak for everyone involved in the ISWSC when I say we appreciate your membership in the group. Please feel free to send me any suggestions by e-mail at [john.seidl@gmail.com](mailto:john.seidl@gmail.com) or mail a note via the USPS to 4324 Granby Way; Marietta, GA 30062. I



promise every bit of input will be addressed and replied to. I look forward to working with you to grow the ISWSC to our full potential!

## POST SCRIPTUM: Persia

By Alfred Consiglio (#2656)

Persia (present-day Iran) issued its first stamps in 1868 with a design showing the traditional heraldic lion engraved by A. Barre. There is no non-Arabic lettering, not even the numerals. In 1875, the dies were re-engraved by G. von Riederer to include value in "English" numbers inserted by hand on the *clichés* under the beast. However, they continued to be printed in Teheran by typography.



Vienna Government Works, with the Shah's portrait featured prominently.

As can be expected, varieties are numerous—including papers, shades and perforations. The year 1878 brought a new series, designed and printed at the



Check your expiration date and renew early!

EXCHANGE YOUR DUPLICATES. Worldwide mint never hinged complete sets for same. Even exchange according to Scott Catalog. Al Collman (#1708); 7686 Caprio Dr; Boynton Beach, FL 33472-7370—USA. [03-04/13]

BREAKING UP 64-YEAR ACCUMULATION. Let me send you a stuffed envelope of old, new, mint and used, etc. Pick what you want at 1/3 SCV and return the balance. Robert Gelfman (#1849); Box 315; Old Bethpage, NY 11804-0315—USA. [09-10/12]



## Membership Update

### New Members

- 2760 **Heather Tobin** (exp. 09/30/13)  
1 Donovan Court  
Merrimack, NJ 03054-6213—USA  
Mysticalheather@gmail.com  
A, G, Adv (37), CC, Top (Flowers, Animals, Art), 1 (Worldwide), 2 (Worldwide, USA), 3 (Worldwide), 4-6, 8, 9 (Worldwide), L (French)
- 2761 **Catherine Pitts** (exp. 10/31/13)  
810 Long Drive Road  
Summerville, SC 29485-6244—USA  
SoCarolinaCathy@yahoo.com  
B (to 1950), D, Int (40), EE
- 2762 **Thaddeus Perry** (exp. 10/31/13)  
106 Chippenham Lane  
Fishers, IN 46038-3512—USA  
thadperry@yahoo.com
- 2763 **Donald Faulkenbury** (exp. 10/31/13)  
1832 Washington Ave  
Anchorage, AK 99515-2552—USA  
dfulkenbury@alaska.net  
A, F, Int (50), EE, Top (World War II), 1 (Worldwide, USA), 2 (USA), 4 & 8 (Worldwide, USA), L (German)
- 2764 **G. Grant Smyrlakis** (exp. 10/31/13)  
359 Ludlow Ave, #20  
Cincinnati, OH 45220-2027—USA  
ggrant1000@yahoo.com  
B (to 1940), G, Int (42), DD, 1 & 3 (Worldwide), 10 (Revenue Tax Stamps, postage dues)
- 2765 **John Hodge** (exp. 10/31/13)  
1825 Farnsley Road  
Louisville, KY 40216-4701—USA  
crisophe@rocketmail.com  
B (1860-1960), F, Int (50), DD, 7 (Netherlands), 10 (Anything that might catch my eye)
- 2766 **Randy Mundy** (exp. 10/31/13)  
5009 Little Turtle Drive  
Birmingham, AL 35242-3247—USA  
rkmundy@yahoo.com  
A, F, Int (30), DD, 3 (USA), 7 (Argentina, Israel, Germany)
- 2767 **Anthony Manganello** (exp. 10/31/13)  
1677 Hawkins Road  
Annapolis, MD 21401-6456—USA  
asncmango@aol.com  
A, D, Adv (50), DD, L (French, Spanish, German)

### New Members (continued)

- 2768 **Melvin Melloy** (exp. 10/31/13)  
5081 SE Devenwood Way  
Stuart, FL 34997-2148—USA  
A, G, Adv (60+), EE, 10 (No USA, Canada, United Kingdom, Ireland, Israel)
- 2769U **John Robertson** (exp. 10/31/15)
- 2770 **Jack W. Wainwright** (exp. 10/31/13)  
7104 Cannonade Court  
Prospect, KY 40059-9332—USA  
jackw@uadmin.com  
A, G, Adv (40), DD, 1, 3, 8 (Worldwide, USA), 10 (All Scott listed material, no CTO)
- 2771 **C. S. Rejent** (exp. 10/31/13)  
PO Box 71657  
Marietta, GA 30007-1657—USA  
csrejent@bellsouth.net  
B (1840-1940), G, Int (50+), DD, 4 (USA)
- 2772 **John Svoboda** (exp. 10/31/13)  
404 Muirfield Drive  
Princeton, KY 42445-2357—USA  
svobodaj@bellsouth.net
- 2773 **Larry A. Anderson** (exp. 10/31/13)  
2412 Kentucky Drive  
Longview, TX 75605-3124—USA  
r.a.anderson.tx@gmail.com  
A, E, Adv (60), EE, 4 (USA)
- 2774 **Norman Yost** (exp. 10/31/13)  
1010 Heaps Road  
Street, MD 21154-1415—USA  
myaugust@aol.com  
A, G, Int (22), EE, 7 (Worldwide, USA)
- 2775 **Christopher Petito** (exp. 10/31/13)  
PO Box 89  
Garrett Park, MD 20896-0089—USA  
cpetito@willkie.com  
A, F, Int (20+), DD, 7 (British Commonwealth)
- 2776 **David Cox** (exp. 10/31/13)  
230 Vernon Street  
Bridgewater, MA 02324-2266—USA  
honeyanddave@aol.com  
A, F, Adv (50), EE

### Changes/Corrections/Reinstatements

- 399 **LeRoy H. Curtis**
- 2731 **Ron Zukin**  
Admirals Port Condo  
2851 NE 183 Street, Apt 1611  
Aventura, FL 33160-2143  
ronzuket@gmail.com